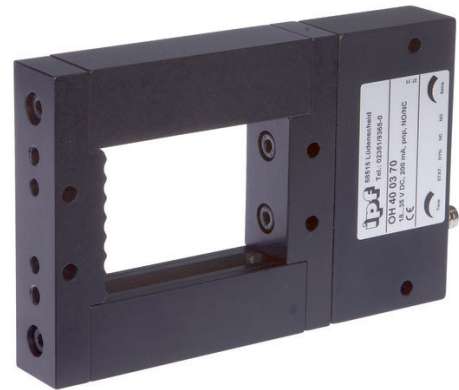


OH400370

OPTICAL SENSORS • FRAME LIGHT BARRIERS

sensor optical, frame 40x49, 80x20x125mm, Static and dynamic, resolution 1mm, 18-35V DC, PNP NC/NO, Connector M8 3pin, IP67, Aluminum+PMMA, With time function



MECHANICAL FEATURES

Active zone height	49 mm
Active zone width	40 mm
Ambient temperature	0 °C ... 60 °C
Constructive design	One-piece
Degree of protection (IP)	IP67
Design	Cuboid
Frame opening, crosswise	40 mm
Frame opening, lengthwise	60 mm
Housing material	Aluminum
Material of optical surface	PMMA
Reflector included in the scope of delivery	-
Sensor height	80 mm
Sensor length	20 mm
Sensor width	125 mm
With compressed air connection	+
With mechanical impact protection	+

ELECTRICAL FEATURES

Analog output 0 mA ... 20 mA	-
Analog output 0 V ... 10 V	-
Analog output -10 V ... +10 V	-
Analog output 4 mA ... 20 mA	-
No-load current	30 mA
Number of pins	3
Operating voltage (MAX)	35 V
Pulse stretching	0.1 ms ... 150 ms
Rated control supply voltage U_s at DC	18 V ... 35 V
Rated switching current	200 mA
Reaction time	0.1 ms
Reverse polarity protection	+
Setting procedure	Manual adjustment
Short-circuit protection	+
Suitable for safety functions	-

ELECTRICAL FEATURES

Type of electrical connection	Connector M8
Type of switching function	Normally closed contact/normally open contact
Type of switching output	PNP
Voltage type	DC
With communication interface, analog	-
With communication interface, AS-Interface	-
With communication interface, CANOpen	-
With communication interface, DeviceNet	-
With communication interface, Ethernet	-
With communication interface, INTERBUS	-
With communication interface, PROFIBUS	-
With communication interface, RS-232	-
With communication interface, RS-422	-
With communication interface, RS-485	-
With communication interface, SSD	-
With communication interface, SSI	-
With LED display	+
With monitoring function of downstream devices	-
With other analog output	-
With time function	+

OPTICAL FEATURES

Light source	Infrared light
Wavelength of the sensor	880 nm
Min. object size	1 mm
Resolution, dynamic	0.7
Resolution, static	1

OTHER FEATURES

Version	Static and dynamic
---------	--------------------

Other

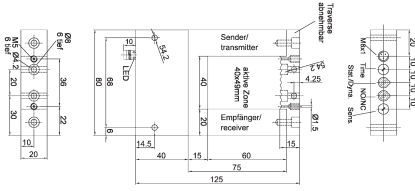
Packaging dimensions	99.0mm x 60mm x 160mm
Shipping weight	0.41kg
Tariff code	85365019

Classification

ipf product group	112
eClass 8.0	27270911
eClass 9.0	27270911
eClass 9.1	27270911
ETIM-5.0	EC002721
ETIM-6.0	EC002721
ETIM-7.0	EC002721

Connection

Dimensional drawing



Installation



Mounting / installation may only be carried out by a qualified electrician!

Disposal



Safety warnings

Before initial operation, please make sure to follow all safety instructions that may be provided in the product information. Never use these devices in applications where the safety of a person depends on their functionality. LED lighting systems can generate intensive UV radiation, which can damage your eyes in case of improper use. The manufacturer cannot be held responsible for damages that result from improper use or connection.