

AL000027

Accessories • Fiber optics plastic fiber connection adapter

accessories fiber optic, Adapter, barrier, diffuse-reflection sensor, Ø1,3mm 20long, Duplex, Plastic



Mechanical features

Width	6.5 mm
Diameter	1.3 mm
Height	15 mm
Length	20.5 mm
Material	Plastic

Other features

Suitable for	Diffuse reflection sensor
Suitable for through-beam sensors	Yes

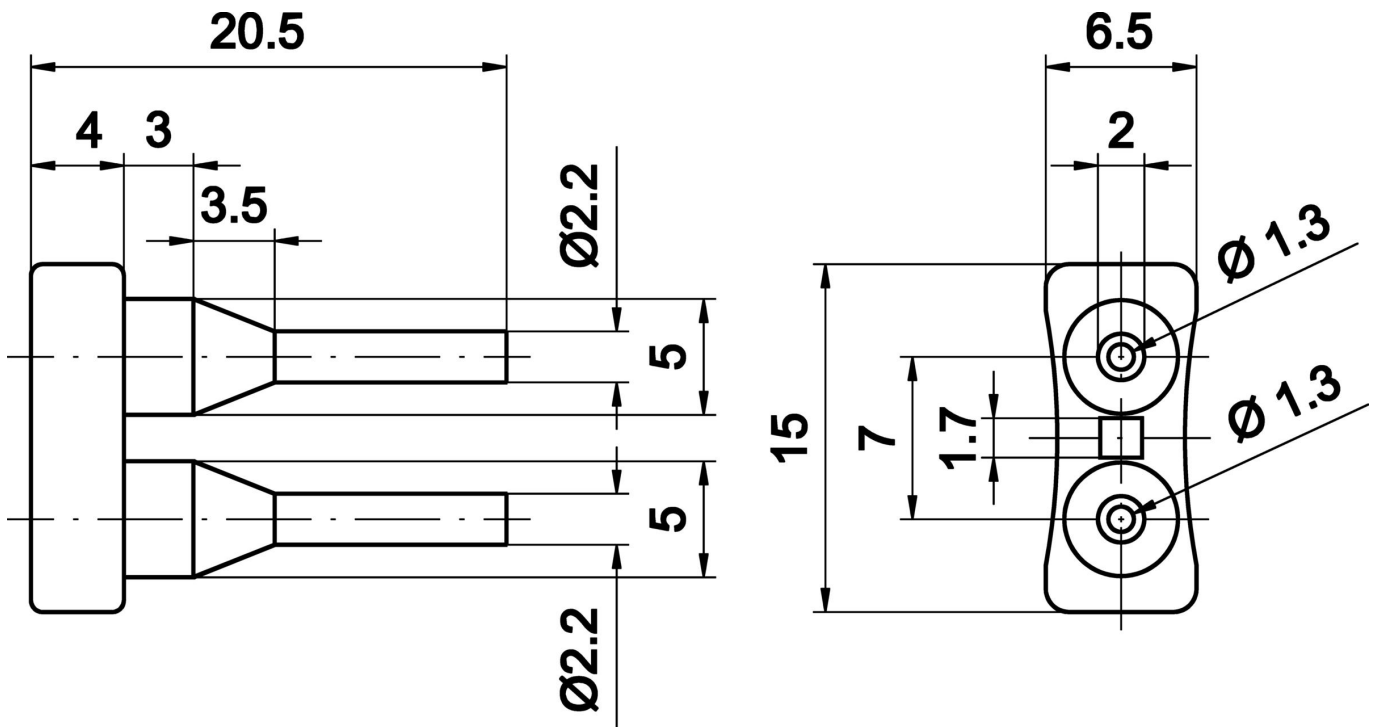
Classification

ETIM 8	EC002609 Accessories/spare parts for fiber optic technology
--------	---

More

IPF Product Group	900 accessories
packaging dimensions	195 x 120 x 10 mm
gross weight	2 g
Customs tariff number	39269097
WEEE number	40951076
OzDS-compliant	Yes
POP-compliant	Yes
Reach-compliant	Yes
RoHS-compliant	Yes

Dimensional drawing



Installation

Mounting / installation may only be carried out by a qualified electrician!



Disposal

WEEE number according to § 6 para. 3
ElektroG: 40951076

Safety warnings

- / Before initial operation, please make sure to follow all safety instructions that may be provided in the product information.
- / Never use these devices in applications where the safety of a person depends on their functionality.