

AM990076

Accessories • Magnets

Accessories, magnetic, 13x88x25mm, PA 6.6 (plastic)



Mechanical features

Design	Angular
Width	25 mm
Height	13 mm
Length	88 mm
Housing material	PA 6.6 (synthetic)
Magnet material	Hard ferrite

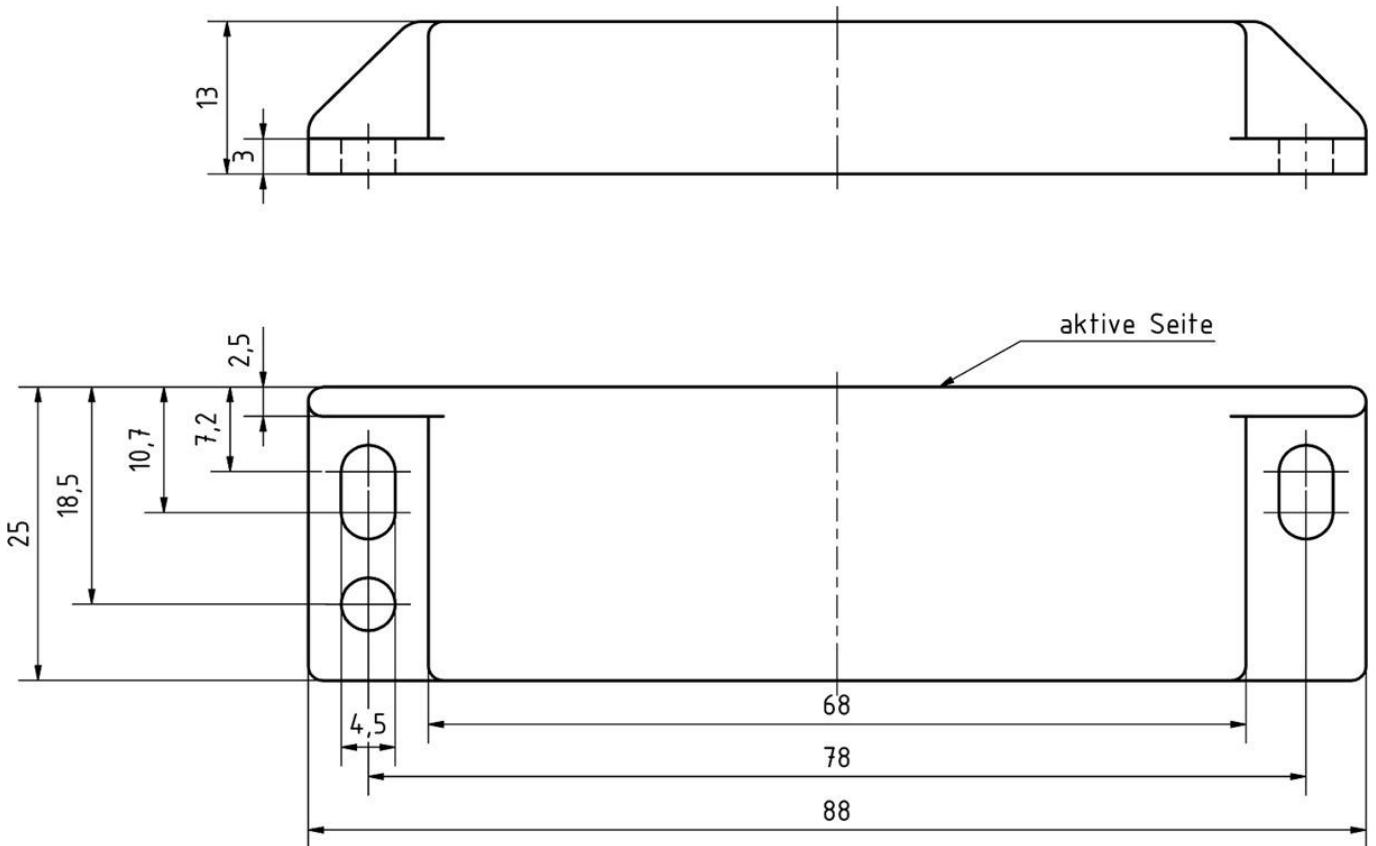
Classification

ETIM 8	EC001769 Holding magnet for door hold-open system
--------	---

More

IPF Product Group	900 accessories
packaging dimensions	123 x 77 x 25 mm
gross weight	50 g
Customs tariff number	85051910
WEEE number	40951076
POP-compliant	Yes
Reach-compliant	Yes
RoHS-compliant	Yes

Dimensional drawing



Installation

Mounting / installation may only be carried out by a qualified electrician!



Disposal

WEEE number according to § 6 para. 3
ElektroG: 40951076

Safety warnings

- /** Before initial operation, please make sure to follow all safety instructions that may be provided in the product information.
- /** Never use these devices in applications where the safety of a person depends on their functionality.
- /** Very strong permanent magnets, fragile. Risk of injury during handling due to high attractive force. Risk of breakage if improperly unpacked. Keep away from pacemakers, magnetic data memories, electrical and electronic devices.