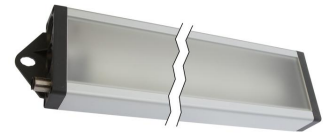


AO000483

LED lights • Workplace lights

LED workplace light, 35x545x85mm, white light, 24W, 3600lx, 5500K, 22-26V DC, M12-connector 4-pin, IP50, aluminum+plastic diffuse, on/off switch



Aperture and shadow-free illumination luminous efficiency

The lights create a pleasant, motivating daylight white light atmosphere at (system) workstations with a color temperature of 5,200 to 5,700 Kelvin. Thanks to the matt lens, homogeneous, glare-free and shadow-free illumination is achieved with high luminous efficiency. The robust aluminum housing with integrated mounting dissipates heat to the rear.

The lights can be used, for example, at system and assembly stations, inspection stations and in machines or assembly lines without cooling lubricants or chip bombardment. With the integrated mounting brackets, the devices can be mounted easily and in any position, for example with slot nuts directly on aluminum profiles.

Electrical features

Type of electrical connection	Connector M12
Rated operating current	1000 mA
Power	24 W
Luminous flux	3217 lm
Number of pins	4
Protection class	III
Reverse polarity protection	Yes
Operating voltage (DC)	21,6 - 26,4 V
ardSOCA_ElektrischerAnschluss	M12 4-pin plug connector
ardSOCA_Betriebsspannung	22-26VDC

Mechanical features

Design	Cuboid
Width	85 mm
Height	35 mm
Length	545 mm
Degree of protection (IP)	IP50
Front screen scattering behavior	diffuse
Housing material	Aluminum
Front screen material	Plastic
Ambient temperature	-10 - 40 °C
ardSOCA_Abmessungen	545x85x35mm

Optical features

Illuminance at 500mm distance	3600 lx
Illumination in the center (distance 1 m)	900 lx
Color temperature	5500 K
Lamp	LED
Light source	White light
Angle of beam spread	100 °
Risk group	0

Other features

Features	with on/off switch
----------	--------------------

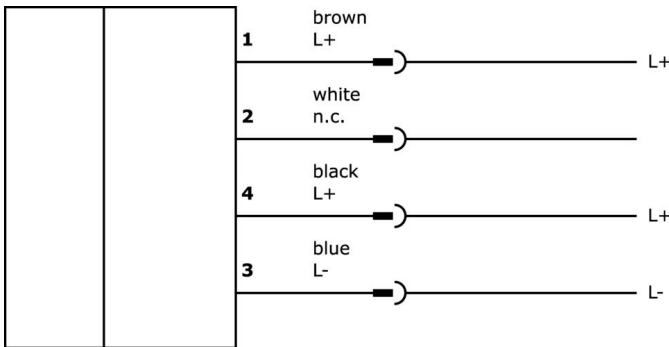
Classification

ETIM 8	EC000348 Machine and workbench light
--------	--------------------------------------

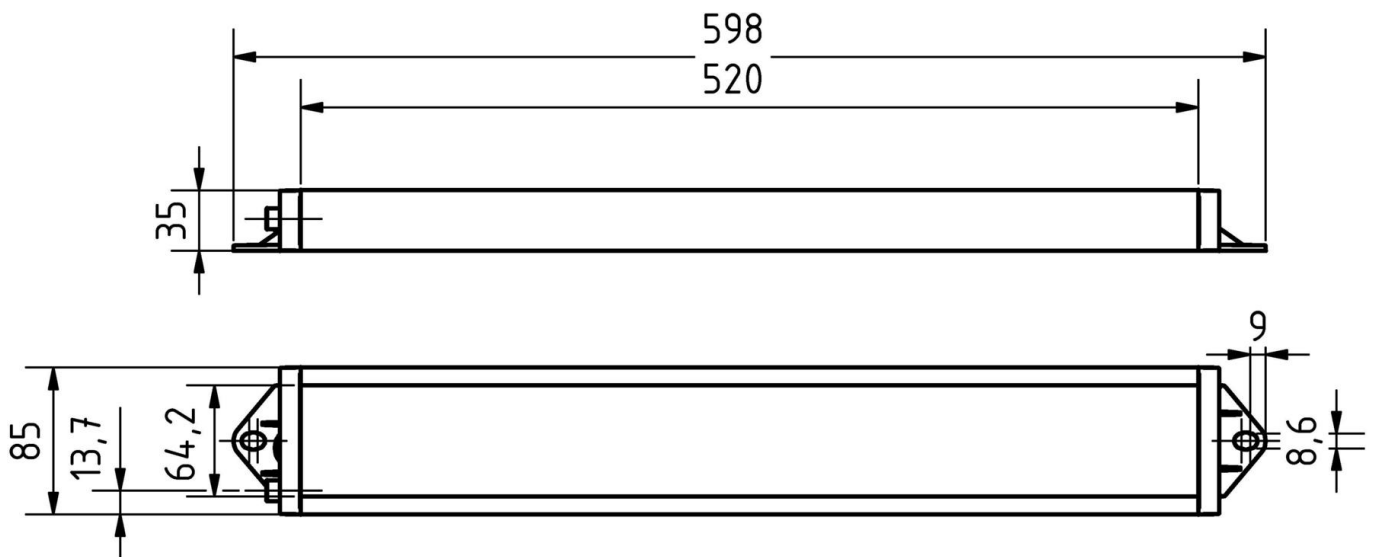
More

IPF Product Group	190 machine illuminations
packaging dimensions	700 x 160 x 155 mm
gross weight	1420 g
Customs tariff number	94054239
WEEE number	40951076
Reach-compliant	Yes
RoHS-compliant	Yes

Connection



Dimensional drawing



Extract accessories program

VY000007



LED brightness module,
55x120x80mm, 4A, 24V DC, M12-
connector, IP40, plastic

VK000037



Adaption, M12 Female (socket)
3pin Straight, M8 Male
(connector) 3pin Straight, 24V, -
25-85°C, IP67, Oil and cooling
lubricants, Welding area

VK030F21



Connection cable, 0.3m, M12
socket 4-pin angular, M12
connector 4-pin straight, 4x0.
34mm², 240V, IP67, suitable for
trailing chain and torsion resistant,
oils and cooling lubricants,
welding area, silicone-free

VK030F25



Connection cable, 0.3m, M12
socket 4-pin straight, M12
connector 4-pin straight, 4x0.
34mm², PUR (polyurethane),
240V, IP67, suitable for trailing
chain and torsion resistant, oils
and cooling lubricants, welding
area, silicone-free

VK200021



Connection cable, 2m, M12
Female (socket) 3pin Angular, Free
conductor end, 3x0.34mm², PUR
(Polyurethane), Ø4.3mm, 250V, -
30-90°C, IP67, Suitable for trailing
chain and torsion resistant, Oil and
cooling lubricants, Welding area,
Silicone-free

VK200025



Connection cable, 2m, M12
Female (socket) 3pin Straight, Free
conductor end, 3x0.34mm², PUR
(Polyurethane), Ø4.3mm, 250V, -
30-90°C, IP67, Suitable for trailing
chain and torsion resistant, Oil and
cooling lubricants, Welding area,
Silicone-free

VK030F60



Connection cable, 0.3m, M12
socket 3-pin angular, M8
connector 3-pin straight, 3x0.
34mm², PUR (polyurethane), 60V,
IP67, suitable for trailing chain and
torsion resistant, oils and cooling
lubricants, welding area, silicone-
free

VK030F64



Connection cable, 0.3m, M12
socket 3-pin straight, M8
connector 3-pin straight, 3x0.
34mm², PUR (polyurethane), 60V,
IP67, suitable for trailing chain and
torsion resistant, oils and cooling
lubricants, welding area, silicone-
free

VK003020



Cable socket, angular, self-
assembly, screw connection, Ø3-6.
5mm, 4A, 240V, -25-90°C, M12
socket 4-pin, IP67, PBT

You can find further accessories on our homepage



Installation

Mounting / installation may only be carried out by a qualified electrician!



Disposal

WEEE number according to § 6 para. 3
ElektroG: 40951076

Safety warnings

- /** Before initial operation, please make sure to follow all safety instructions that may be provided in the product information.
- /** Never use these devices in applications where the safety of a person depends on their functionality.
- /** LED lighting systems can generate intensive UV radiation, which can damage your eyes in case of improper use. The manufacturer cannot be held responsible for damages that result from improper use or connection.