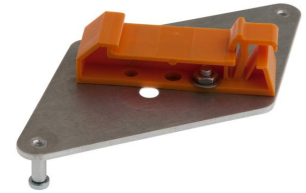


A098C526

Accessories • Mounting

accessories optical, Mounting rail adapter, 74x93x2mm, Straight, DIN rail (top hat rail) 35 mm, Metal, Snap connection



Mechanical features

DIN-rail adapter design	straight
Width	2 mm
Height	74 mm
Length	93 mm
Mounting method	Top hat rail
Material	Metal

Classification

ETIM 8	EC001024 Carrier rail adapter
--------	-------------------------------

More

IPF Product Group	900 accessories
packaging dimensions	150 x 100 x 20 mm
gross weight	50 g
Customs tariff number	73269098
WEEE number	40951076
Reach-compliant	Yes
RoHS-compliant	Yes



Installation

Mounting / installation may only be carried out by a qualified electrician!



Disposal

WEEE number according to § 6 para. 3 ElektroG: 40951076

Safety warnings

/ Before initial operation, please make sure to follow all safety instructions that may be provided in the product information.

/ Never use these devices in applications where the safety of a person depends on their functionality.