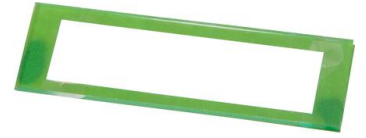


# AP000041

## Accessories • Protective shields

Accessories Laser, front screen, 2.4x66x20mm, plastic+PMMA



### Mechanical features

Width	20 mm
Height	2.4 mm
Length	66 mm
Active area material of sensor	Plastic (PMMA)
Housing material	Plastic

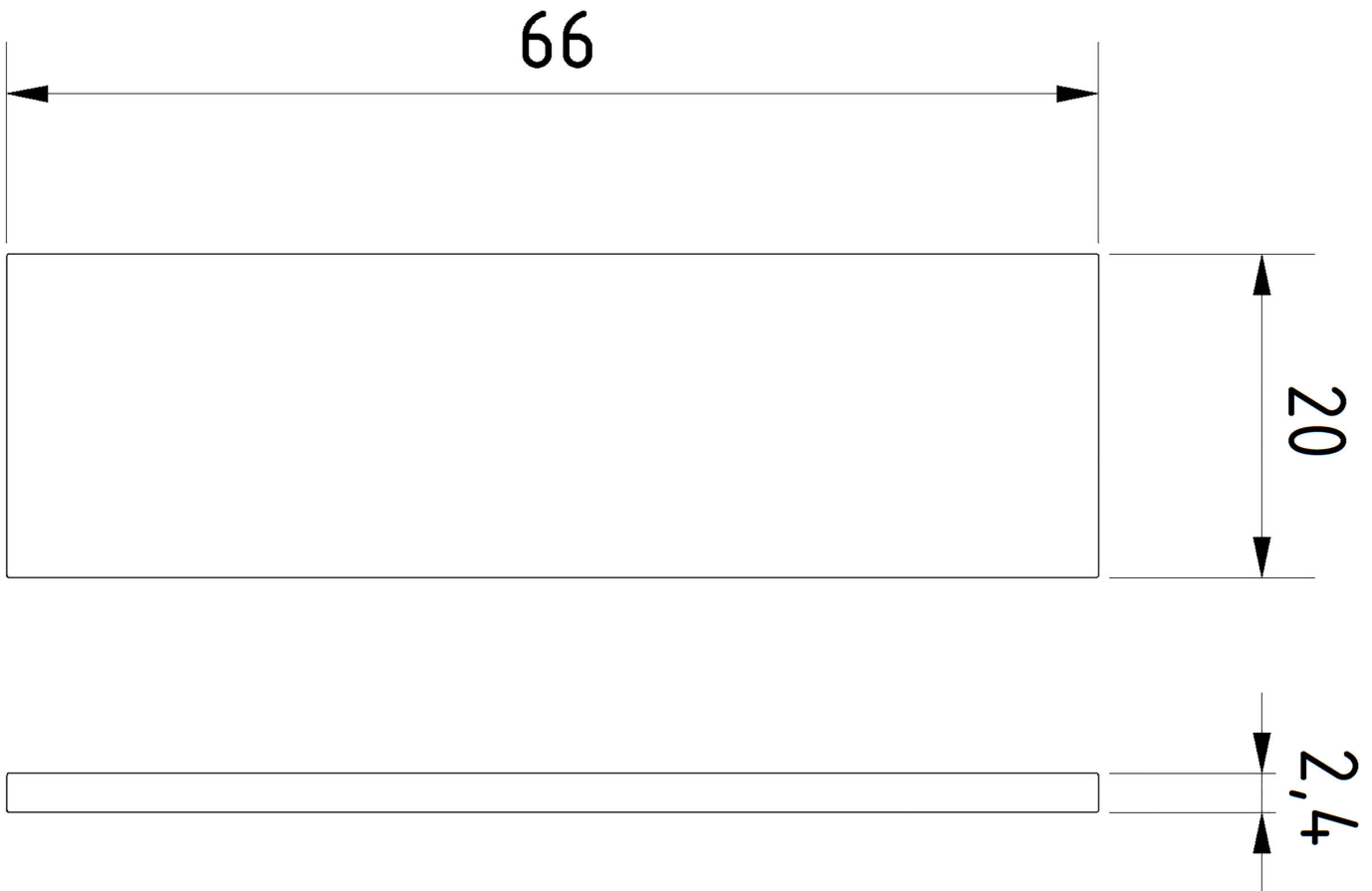
### Classification

ETIM 8	EC002024 Accessories/spare parts for command devices
--------	--

### More

IPF Product Group	900 accessories
packaging dimensions	145 x 90 x 2 mm
gross weight	6 g
Customs tariff number	39269097
WEEE number	40951076
Reach-compliant	Yes
RoHS-compliant	Yes

**Dimensional drawing**



**Installation**

Mounting / installation may only be carried out by a qualified electrician!



**Disposal**

WEEE number according to § 6 para. 3  
ElektroG: 40951076

**Safety warnings**

/ Before initial operation, please make sure to follow all safety instructions that may be provided in the product information.

/ Never use these devices in applications where the safety of a person depends on their functionality.