

AS000013

Accessories • Fittings - Adapters

accessories flow, Adapter, M18x1.5 30long, V4A



Mechanical features

| | |
|----------------------------|------------------------|
| Type of process connection | G1/2 inch |
| Design | Straight |
| Thread pitch | 1.5 mm |
| Length | 30 mm |
| Material | Stainless steel 1.4571 |
| Thread dimension | M18 |

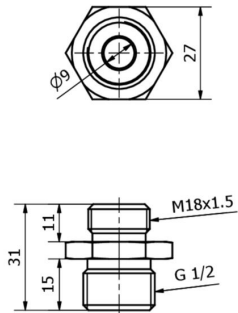
Classification

| | |
|--------|--|
| ETIM 8 | EC002024 Accessories/spare parts for command devices |
|--------|--|

More

| | |
|-----------------------|-------------------|
| IPF Product Group | 900 accessories |
| packaging dimensions | 163 x 153 x 22 mm |
| gross weight | 63 g |
| Customs tariff number | 90269000 |
| WEEE number | 40951076 |
| Reach-compliant | Yes |
| RoHS-compliant | Yes |

Dimensional drawing



Installation

Mounting / installation may only be carried out by a qualified electrician!



Disposal

WEEE number according to § 6 para. 3
ElektroG: 40951076

Safety warnings

- / Before initial operation, please make sure to follow all safety instructions that may be provided in the product information.
- / Never use these devices in applications where the safety of a person depends on their functionality.