

AS000014

Accessories • Fittings - Adapters

accessories flow, Adapter, M18x1.5 37long, V4A



Mechanical features

Type of process connection	G1/2 inch
Design	Straight
Thread pitch	1.5 mm
Length	37 mm
Material	Stainless steel 1.4571
Thread dimension	M18

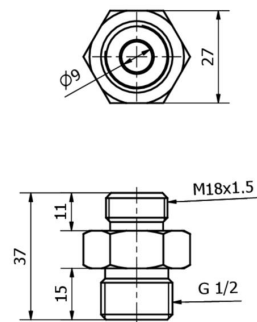
Classification

ETIM 8	EC002024 Accessories/spare parts for command devices
--------	--

More

IPF Product Group	900 accessories
packaging dimensions	163 x 153 x 29 mm
gross weight	91 g
Customs tariff number	90269000
WEEE number	40951076
Reach-compliant	Yes
RoHS-compliant	Yes

Dimensional drawing

**Installation**

Mounting / installation may only be carried out by a qualified electrician!

**Disposal**

WEEE number according to § 6 para. 3
ElektroG: 40951076

Safety warnings

- / Before initial operation, please make sure to follow all safety instructions that may be provided in the product information.
- / Never use these devices in applications where the safety of a person depends on their functionality.