

## AY000029

### stop tappet • Holders for stop tappets

Accessories Sensor, holder, Ø6.5mm 20 long



The stop tappet system is ideal when contactless inquiry is not possible or can be prevented. The movement absorbed via the actuating element is guided through the housing via a shaft and pushes out a metal surface on the other side, which can be detected by an inductive sensor. This enables fully electronic inquiry without the risk of damaging the sensor.

In this system, this holder serves as a connecting piece between the plunger and the sensor. It is compatible with a whole range of plungers and sensors.

Made of brass, the AY000029 is suitable for flush-mounted inductive sensors of the Ix06 design.

#### Mechanical features

Design	Straight
Length	20 mm
Wrench size	12 mm
Material	Nickel-plated (n-pltd) brass

#### Other features

Suitable for	Design Ix06 - flush
--------------	---------------------

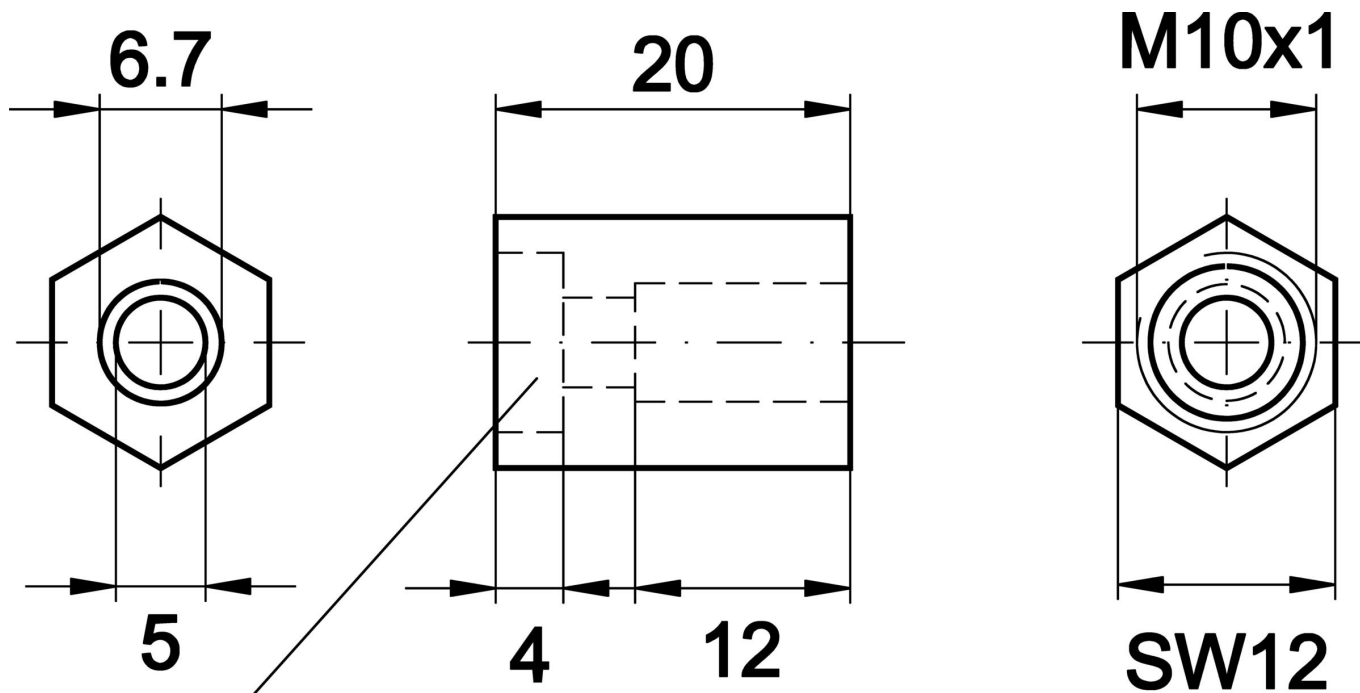
#### Classification

ETIM 8	EC002024 Accessories/spare parts for command devices
--------	--

#### More

IPF Product Group	900 accessories
packaging dimensions	120 x 100 x 10 mm
gross weight	10 g
Customs tariff number	73269098
WEEE number	40951076
Reach-compliant	Yes
RoHS-compliant	Yes

**Dimensional drawing**



**Kunststoff-Klemmhülse**

**Extract accessories program**

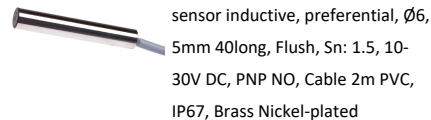
**AY000031**



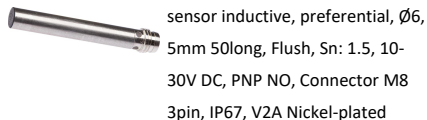
**AY000033**



**IA060100**



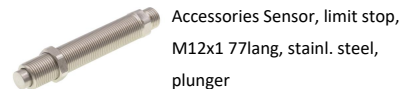
**IA060170**



**AY000040**



**AY000068**



You can find further accessories on our homepage



**Installation**

Mounting / installation may only be carried out by a qualified electrician!



**Disposal**

WEEE number according to § 6 para. 3 ElektroG: 40951076

---

**Safety warnings**

- / Before initial operation, please make sure to follow all safety instructions that may be provided in the product information.
- / Never use these devices in applications where the safety of a person depends on their functionality.