

AY000182

Accessories • Mounting

Accessories Sensor, holder, aluminum, for sensor 20round, adjustable, screw-on mounting



This sensor holder is suitable for all sensors with a housing diameter of 20 mm. The installed sensor can be individually aligned thanks to the various adjustment options. These features make it particularly interesting for the PP20 series laser pointers.

Mechanical features

Outer diameter	45 mm
For sensor	20round
Length	75 mm
Mounting method	Screw mounting
Material	Aluminum

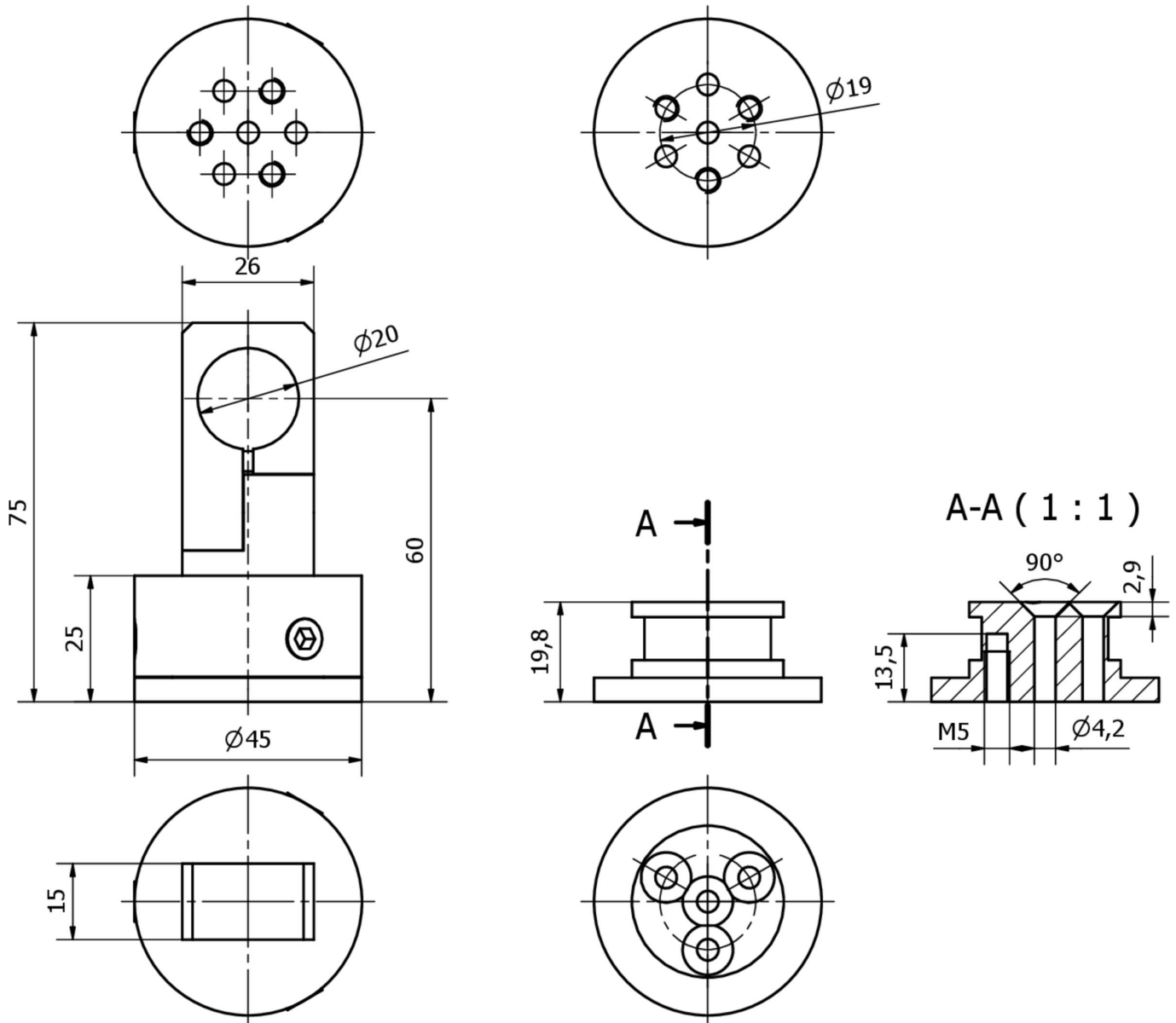
Classification

ETIM 8

More

IPF Product Group	900 accessories
packaging dimensions	143 x 75 x 74 mm
gross weight	154 g
Customs tariff number	76169990
WEEE number	40951076
Reach-compliant	Yes
RoHS-compliant	Yes

Dimensional drawing



Installation

Mounting / installation may only be carried out by a qualified electrician!



Disposal

WEEE number according to § 6 para. 3
ElektroG: 40951076

Safety warnings

/ Before initial operation, please make sure to follow all safety instructions that may be provided in the product information.

/ Never use these devices in applications where the safety of a person depends on their functionality.