

CS360001

Measuring transducer • Electricity meter

Active energy meter, 90x36x64mm, 184-288V AC, 1-phase, direct, 80A, Ethernet communication, MID, screw connection, IP20



MID certification Ethernet communication

The CS360001 active energy meter is a modular energy meter that displays the energy (kWh, kVAh and kVA) and other measured values directly on a backlit LCD. The devices are designed for single-phase networks and can be connected directly up to 80 A. For easy recording of your consumption, the devices have an integrated Ethernet Modbus TCP communication output.

Electrical features

Display	LCD display LED display
Type of electrical connection	Clamped terminal connection
Operating frequency	45 - 65 Hz
Setting procedure	Parameterization
Power consumption	7.5 VA
Max. continuous current	80 A
Max. switching current	0.02 A
Min. current load	250 mA
Supported communication interface	Ethernet
Operating voltage (AC 50Hz)	184 - 276 V
Operating voltage (AC 60Hz)	184 - 276 V
ardSOCA_ElektrischerAnschluss	Terminal connection
ardSOCA_Betriebsspannung	184-276VAC(50Hz) 184-276VAC(60Hz)
ardTEEL_Genauigkeit_Enum	Wirkenergie (IEC 62053-21) Klasse 1 Wirkenergie (EN 50470) Klasse B Blindenergie (gemäß IEC 62053-22) Klasse 2
ardTEME_AderquerschnittMessklemmen	1,5 - 35 mm ²
ardTEEL_KurzzeitigeUeberlast	30 x I _{max} 10ms

Mechanical features

Width	36 mm
Height	64 mm
Storage temperature	-25 - 75 °C
Length	90 mm
Mounting method	Top hat rail
Degree of protection (IP)	IP20
Housing material	Plastic
Ambient temperature	-25 - 55 °C
ardSOCA_Abmessungen	90x36x64mm

Other features

Relative air humidity (non-condensing)	0 - 80 %
--	----------

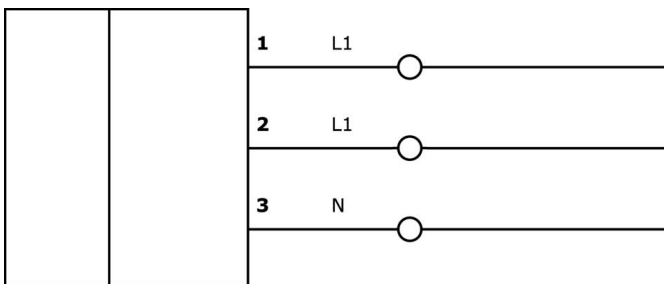
Classification

ETIM 8

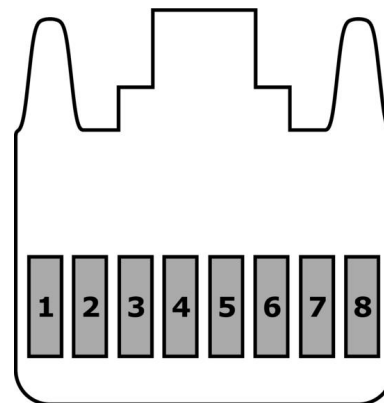
More

IPF Product Group	730 special devices (diverse)
packaging dimensions	
gross weight	
Customs tariff number	90283011
WEEE number	40951076
Reach-compliant	Yes
RoHS-compliant	Yes

Connection

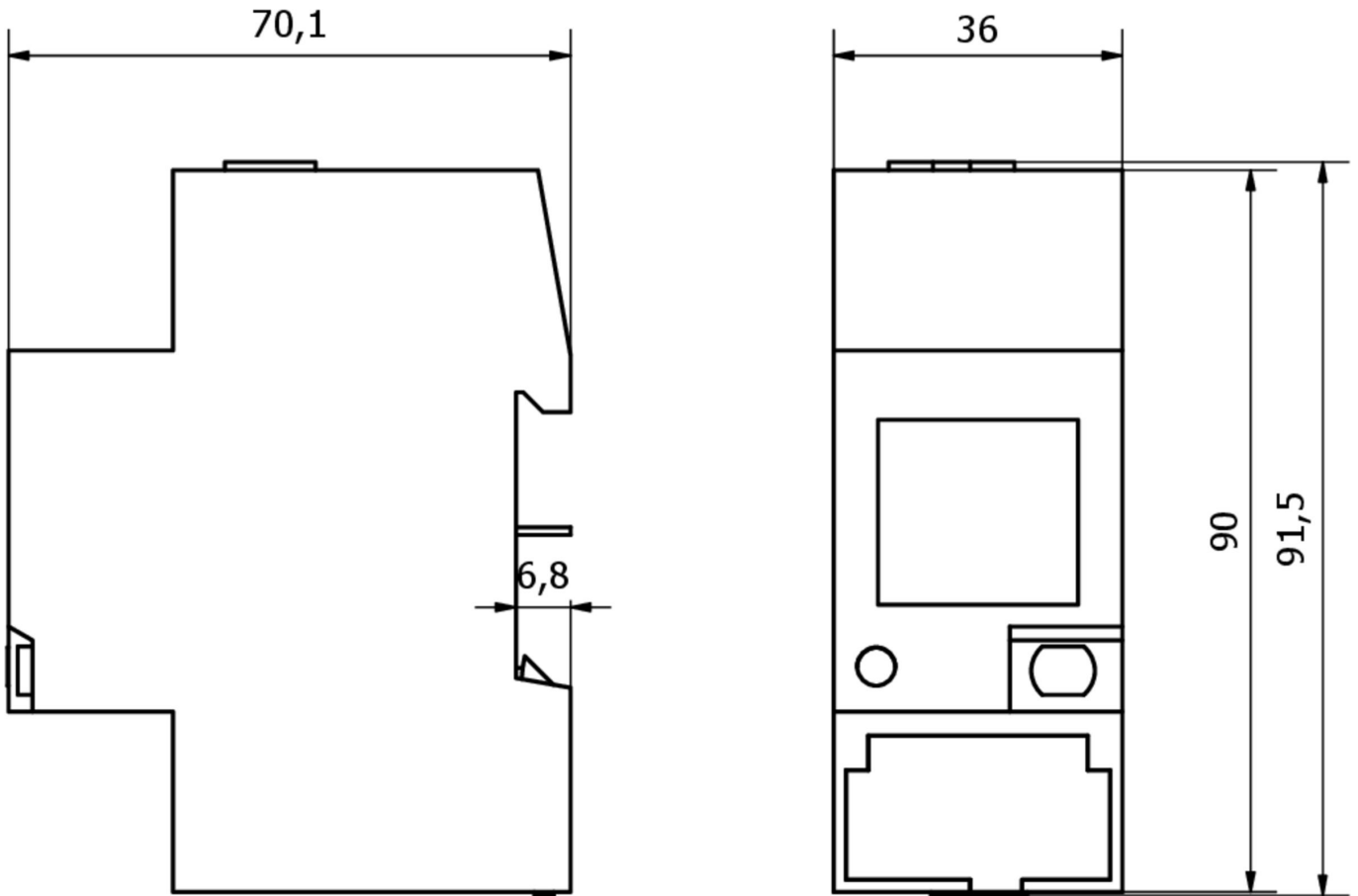


L: Mains input / L': Mains output



- 1** white/orange
- 2** orange
- 3** white/green
- 4** blue
- 5** white/blue
- 6** green
- 7** white/brown
- 8** brown

Dimensional drawing



Installation

Mounting / installation may only be carried out by a qualified electrician!



Disposal

WEEE number according to § 6 para. 3
ElektroG: 40951076

Safety warnings

- / Before initial operation, please make sure to follow all safety instructions that may be provided in the product information.
- / Never use these devices in applications where the safety of a person depends on their functionality.