

EA300226

LED lights • Workplace lights

LED workplace light, 25x1546x30mm, white light, 37W, 5500K, 22-26V DC, M12-connector 3-pin, IP54, aluminum+polycarbonate diffuse

including Holder



Flicker-free Breakage and splinter-free

Thanks to their compact design (25 x 30mm), these lights can also be used in confined machine rooms and can be used in areas without chip bombardment or cooling lubricants (IP54). An opal, shatterproof polycarbonate coverage protects the electronics from dust and splash water. 120° angle of beam spread ensures powerful illumination in daylight white (5,200-5,700K). Two pairs of luminaire holders for fixed or rotatable mounting are included in the scope of delivery. These allow adjustment in 15° increments.

Electrical features

Type of electrical connection	Connector M12
Rated operating current	1542 mA
Power	37 W
Luminous flux	5670 lm
Number of pins	3
Protection class	III
Reverse polarity protection	Yes
Operating voltage (DC)	21,6 - 26,4 V
ardSOCA_ElektrischerAnschluss	M12 3-pin plug connector
ardTEEL_Lichtausbeute	155 lm/W
ardSOCA_Betriebsspannung	22-26VDC

Mechanical features

Design	Cuboid
Width	30 mm
Height	25 mm
Length	1546 mm
Degree of protection (IP)	IP54
Front screen scattering behavior	diffuse
Housing material	Aluminum
Front screen material	Polycarbonate
Ambient temperature	-10 - 45 °C
ardSOCA_Abmessungen	1546x30x25mm

Optical features

Illumination in the center (distance 1 m)	1089 lx
Color temperature	5500 K
Light source	White light
Angle of beam spread	120 °
Risk group	0

Classification

ETIM 8	EC000348 Machine and workbench light
--------	--------------------------------------

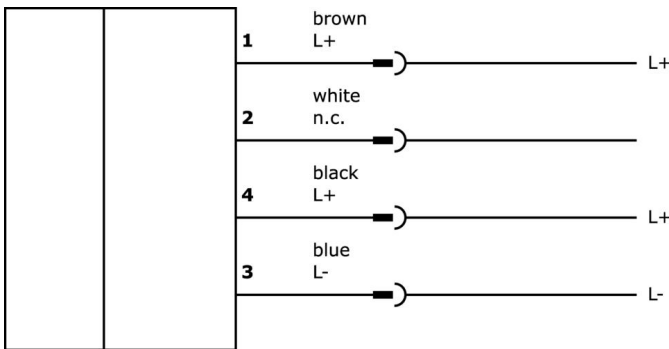
More

IPF Product Group	190 machine illuminations
packaging dimensions	1650 x 85 x 85 mm
gross weight	1518 g
Customs tariff number	94054239
WEEE number	40951076
Reach-compliant	Yes
RoHS-compliant	Yes

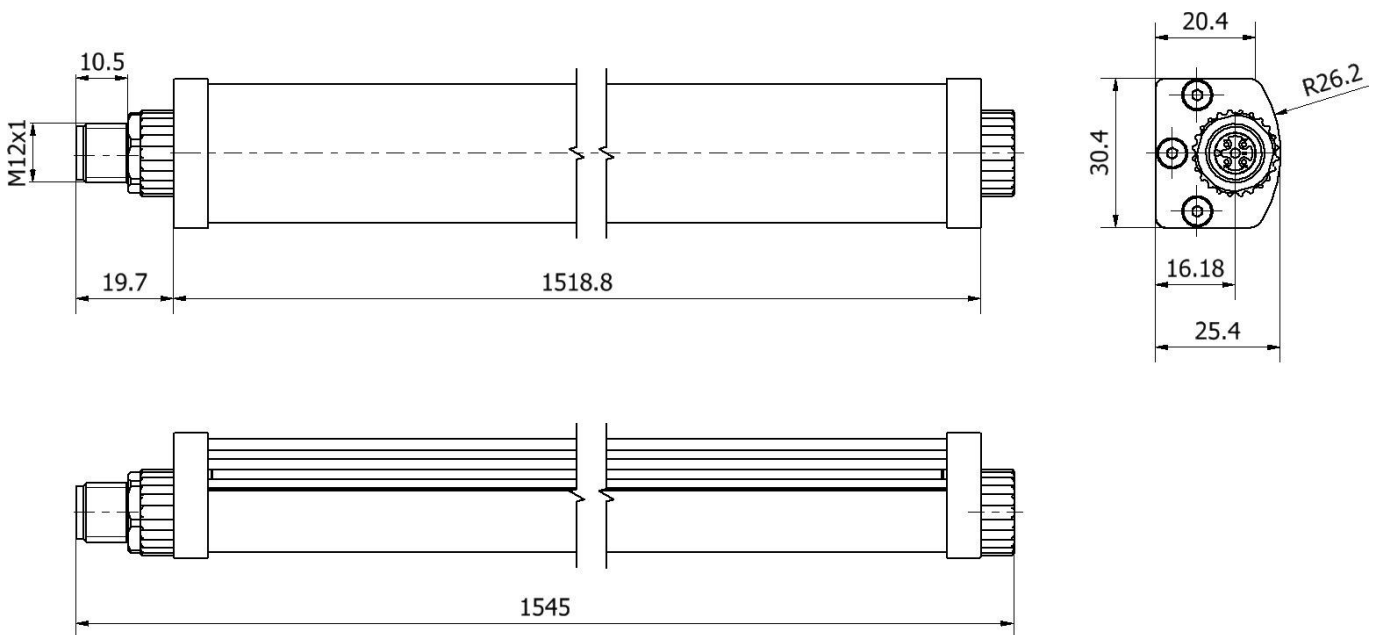
Important notes

/ This article is not suitable for applications with chip bombardment!

Connection



Dimensional drawing



Extract accessories program

AE000024



accessories lights, Mounting bracket, Mounting material for lights, Steel

AE000025



accessories lights, Adhesive magnet, Mounting material for lights, Steel

NY000004



DC power supply, Plug-in power supply, 34x43x75mm, 24V, 1A, PIN 1/3, 100-240V AC, Connector M12 Female (socket) 4pin 1.8m, Plastic, Stabilized, Output voltage, pulsed

NG400501



DC power supply, 1-phase, 125x114x40mm, 24-28V, 5A, 90-264V AC 50Hz, 90-264V AC 60Hz, 127-370V DC, screw connection, IP20, aluminum, stabilized, pulsed output voltage

VK003021



Cable socket, Angular, Suitable for self-assembly, Screw connection, Ø3-6.5mm, 4A, 60V, -25-90°C, M12 Female (socket) 5pin, IP67, PBT

VK003025



Cable socket, Straight, Suitable for self-assembly, Screw connection, Ø3-6.5mm, 4A, 60V, -25-90°C, M12 Female (socket) 5pin, IP67, PBT

VK003020



Cable socket, angular, self-assembly, screw connection, Ø3-6.5mm, 4A, 240V, -25-90°C, M12 socket 4-pin, IP67, PBT

VK200025



Connection cable, 2m, M12 Female (socket) 3pin Straight, Free conductor end, 3x0.34mm², PUR (Polyurethane), Ø4.3mm, 250V, -30-90°C, IP67, Suitable for trailing chain and torsion resistant, Oil and cooling lubricants, Welding area, Silicone-free

VK200021



Connection cable, 2m, M12 Female (socket) 3pin Angular, Free conductor end, 3x0.34mm², PUR (Polyurethane), Ø4.3mm, 250V, -30-90°C, IP67, Suitable for trailing chain and torsion resistant, Oil and cooling lubricants, Welding area, Silicone-free

You can find further accessories on our homepage



Installation

Mounting / installation may only be carried out by a qualified electrician!



Disposal

WEEE number according to § 6 para. 3 ElektroG: 40951076

Safety warnings

- /** Before initial operation, please make sure to follow all safety instructions that may be provided in the product information.
- /** Never use these devices in applications where the safety of a person depends on their functionality.
- /** LED lighting systems can generate intensive UV radiation, which can damage your eyes in case of improper use. The manufacturer cannot be held responsible for damages that result from improper use or connection.