

EM500120

LED lights • Machine and bench lights

LED machine light, Ø50mm 305long, white light, 12W, 1300lx, 5200K, 22-26V DC, -30-50°C, M12 connector 4-pin, IP67/IP69K, plastic PC

including Cable strap



Durable coating to prevent dirt from adhering

These robust and compact high-power surface-mounted LED lights impress with their high performance. Thanks to their polycarbonate housing, the lights are suitable for use in production environments in the food and pharmaceutical industries.

The luminaire diameter is 50 mm. Two cable strap holders and cable straps are included in the scope of delivery. The special aluminum housing also serves to dissipate heat. The lights can be used at ambient temperatures of up to 50 °C can be used.

The angle of emitted beam of 120° ensures that a large area is evenly illuminated.

The color temperature is 5,200 K. The use of SMD LEDs produces a uniform and flicker-free light.

Holders made of PP/V4A (AO000562) are available for the lights up.

The connection is made via an M12-connector made of V4A. The positive pole of the voltage supply can be connected via PIN 1 (brown)

as well as via PIN 4 (black).

Electrical features

Type of electrical connection	Connector M12
Rated operating current	500 mA
Power	12 W
Luminous flux	1100 lm
Number of pins	4
Protection class	III
Operating voltage (DC)	21,6 - 26,4 V
ardSOCA_ElektrischerAnschluss	M12 4-pin plug connector
ardSOCA_Betriebsspannung	22-26VDC

Mechanical features

Design	Pipe
Diameter	50 mm
Length	305 mm
Degree of protection (IP)	IP67 / IP69k
Front screen scattering behavior	diffuse
Housing material	Plastic PC
Front screen material	Polycarbonate
Ambient temperature	-30 - 50 °C
ardSOCA_Abmessungen	Ø50mm, 305mm long

Optical features

Illuminance at 500mm distance	1300 lx
Illumination in the center (distance 1 m)	320 lx
Color temperature	5200 K
Light source	White light
Angle of beam spread	100 °
Risk group	0

Other features

Harsh environmental conditions	Yes
--------------------------------	-----

Classification

ETIM 8	EC000348 Machine and workbench light
--------	--------------------------------------

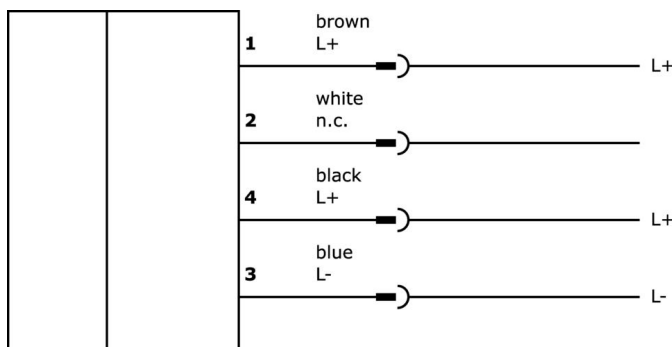
More

IPF Product Group	190 machine illuminations
packaging dimensions	405 x 80 x 80 mm
gross weight	712 g
Customs tariff number	94054239
WEEE number	40951076
Reach-compliant	Yes
RoHS-compliant	Yes

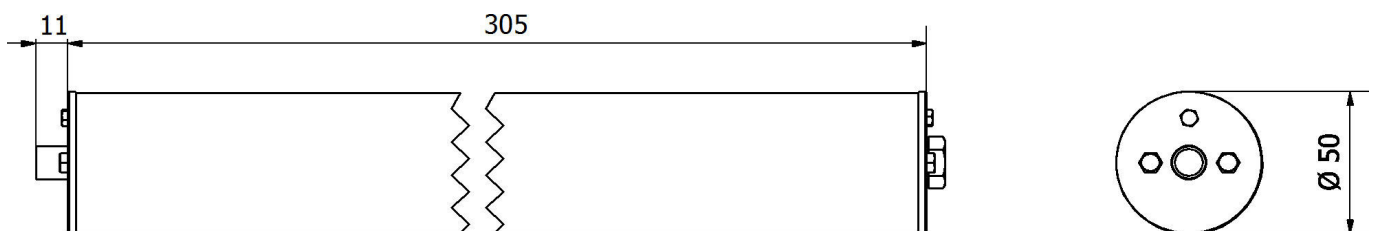
Important notes

/ This article is not intended for use in environments containing oil and cooling lubricants!

Connection



Dimensional drawing



Extract accessories program

VK030F21



Connection cable, 0.3m, M12 socket 4-pin angular, M12 connector 4-pin straight, 4x0.34mm², 240V, IP67, suitable for trailing chain and torsion resistant, oils and cooling lubricants, welding area, silicone-free

VK030F25



Connection cable, 0.3m, M12 socket 4-pin straight, M12 connector 4-pin straight, 4x0.34mm², PUR (polyurethane), 240V, IP67, suitable for trailing chain and torsion resistant, oils and cooling lubricants, welding area, silicone-free

VK003020



Cable socket, angular, self-assembly, screw connection, Ø3-6.5mm, 4A, 240V, -25-90°C, M12 socket 4-pin, IP67, PBT

VK003024



Cable socket, Straight, Suitable for self-assembly, Screw connection, Ø3-6.5mm, 4A, 240V, -25-90°C, M12 Female (socket) 4pin, IP67, PBT

VK003021



Cable socket, Angular, Suitable for self-assembly, Screw connection, Ø3-6.5mm, 4A, 60V, -25-90°C, M12 Female (socket) 5pin, IP67, PBT

VK003025



Cable socket, Straight, Suitable for self-assembly, Screw connection, Ø3-6.5mm, 4A, 60V, -25-90°C, M12 Female (socket) 5pin, IP67, PBT

AO000562



accessories optical, Other, Mounting material for lights

VY000007



LED brightness module, 55x145x121mm, 4A, 24V DC, M12 connector, IP40, plastic

NG400501



DC power supply, 1-phase, 125x114x40mm, 24-28V, 5A, 90-264V AC 50Hz, 90-264V AC 60Hz, 127-370V DC, screw connection, IP20, aluminum, stabilized, pulsed output voltage

You can find further accessories on our homepage



Installation

Mounting / installation may only be carried out by a qualified electrician!



Disposal

WEEE number according to § 6 para. 3 ElektroG: 40951076

Safety warnings

/ Before initial operation, please make sure to follow all safety instructions that may be provided in the product information.

/ Never use these devices in applications where the safety of a person depends on their functionality.

/ LED lighting systems can generate intensive UV radiation, which can damage your eyes in case of improper use. The manufacturer cannot be held responsible for damages that result from improper use or connection.