

## ER494140

### camera additional lighting • Ring lights

LED ring light, Ø49mm 17.2long, white light, 230V AC, 3.84W, aluminum

including Holder, Plug-in power supply



Selecting the right illumination is essential for all types of inspection tasks with a camera sensor, as only high-contrast images can be reproducibly evaluated. And illumination has a decisive influence here. The selection depends on various factors such as the distance to the test object, its size, the component criterion to be tested or the expected environmental conditions. Ring lights provide a direct, focused incident light that is particularly suitable for round test objects as it does not produce any hard object shadows.

Lights are available with different diameters of the lens aperture, different light colors and outputs. The internal flash controller enables flash operation of the lights up, which may be required for short exposure times of the camera systems.

#### Electrical features

Type of electrical connection	connector type C (CEE 7/16)
Rated operating current	160 mA
Flash controller	No
Power	3.84 W
Protection class	I

#### Mechanical features

Diameter	49 mm
Height	17.2 mm
Inner diameter	25 mm
Length	17.2 mm
Degree of protection (IP)	IP40
Housing material	Aluminum
Working distance range	50 - 100 mm
Ambient temperature	0 - 40 °C

#### Optical features

Number of LEDs	56
Color temperature	6700 K
Lamp	LED
Light source	White light
Angle of beam spread	20 °
Risk group	0

**Other features**

Average nominal service life	20000 h
Operational mode	Permanent operation   Switching operation

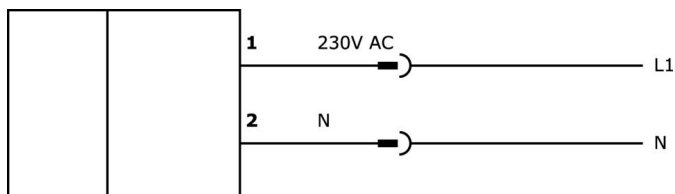
**Classification**

ETIM 8	EC000348 Machine and workbench light
--------	--------------------------------------

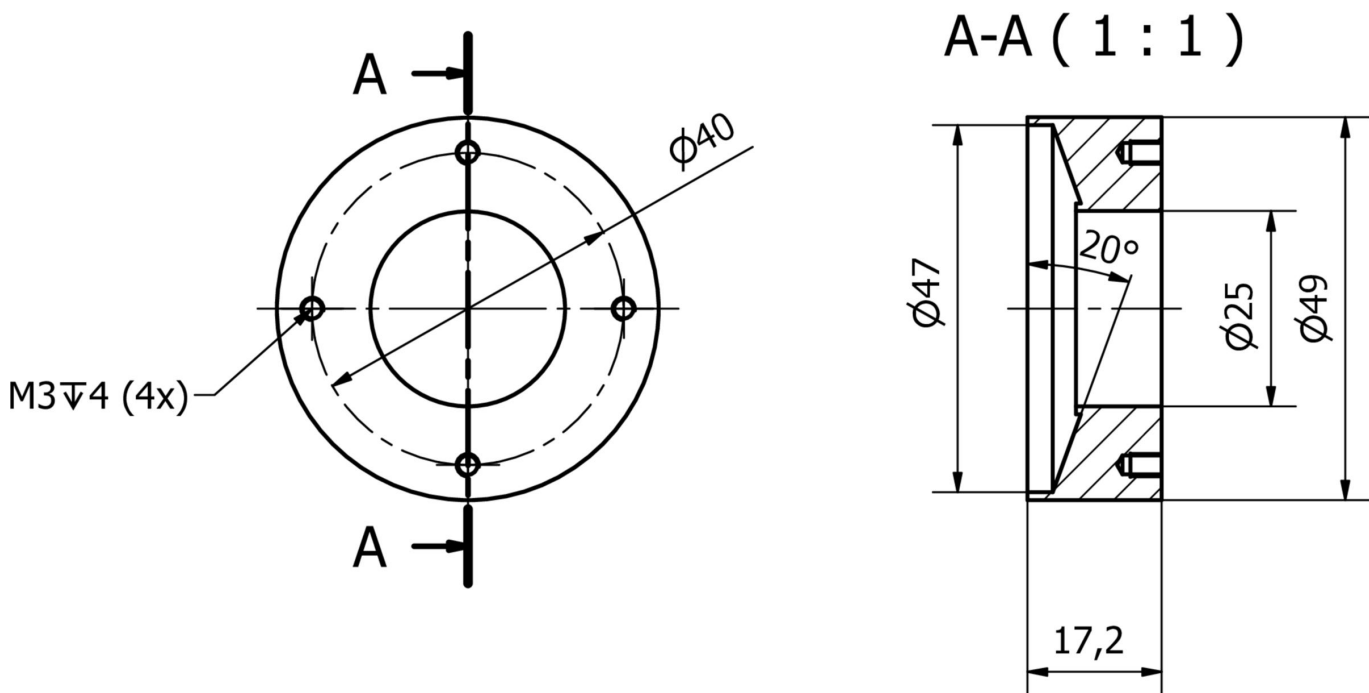
**More**

IPF Product Group	915 camera illumination
packaging dimensions	210 x 138 x 95 mm
gross weight	
Customs tariff number	94054239
WEEE number	40951076
Reach-compliant	Yes
RoHS-compliant	Yes

**Connection**



**Dimensional drawing**



**Installation**

Mounting / installation may only be carried out by a qualified electrician!



**Disposal**

WEEE number according to § 6 para. 3 ElektroG: 40951076

---

**Safety warnings**

- /** Before initial operation, please make sure to follow all safety instructions that may be provided in the product information.
- /** Never use these devices in applications where the safety of a person depends on their functionality.
- /** LED lighting systems can generate intensive UV radiation, which can damage your eyes in case of improper use. The manufacturer cannot be held responsible for damages that result from improper use or connection.