

## ES734241

### camera additional lighting • Reflected light luminaires

LED incident light, 73x68x44mm, white light, 65W, 80000lx, 6000K, 12° angle of emitted beam, 230V AC, aluminum, on/off switch

including Plug-in power supply



### small angle of emitted beam

For any kind of inspection tasks with a camera sensor the lighting is essential, as only high-contrast images enable reproducible evaluations. Here the lighting has a decisive influence. The choice depends on different factors such as the distance to the test object, its size, the component criteria to be tested or the expected environmental conditions.

#### Electrical features

Type of electrical connection	connector type C (CEE 7/16)
Flash controller	No
Power	60 W
Protection class	I
Operating voltage (AC 50Hz)	230 V
ardSOCA_Betriebsspannung	230VAC(50Hz)

#### Mechanical features

Width	44 mm
Height	73 mm
Length	68 mm
Front screen scattering behavior	clear
Housing material	Aluminum
Thread dimension	1/4 inch
ardSOCA_Abmessungen	1/4 inch, 68mm long

#### Optical features

Number of LEDs	7
Illuminance at 500mm distance	80000 lx
Color temperature	6000 K
Lamp	LED
Light source	White light
Angle of beam spread	12 °

#### Other features

Features	switching point integrated
Operational mode	Permanent operation

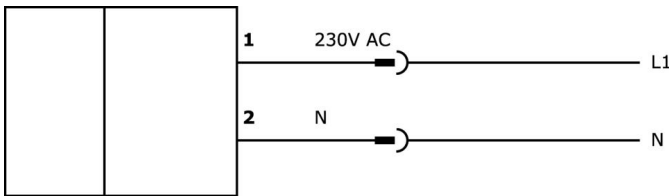
**Classification**

ETIM 8	EC000348 Machine and workbench light
--------	--------------------------------------

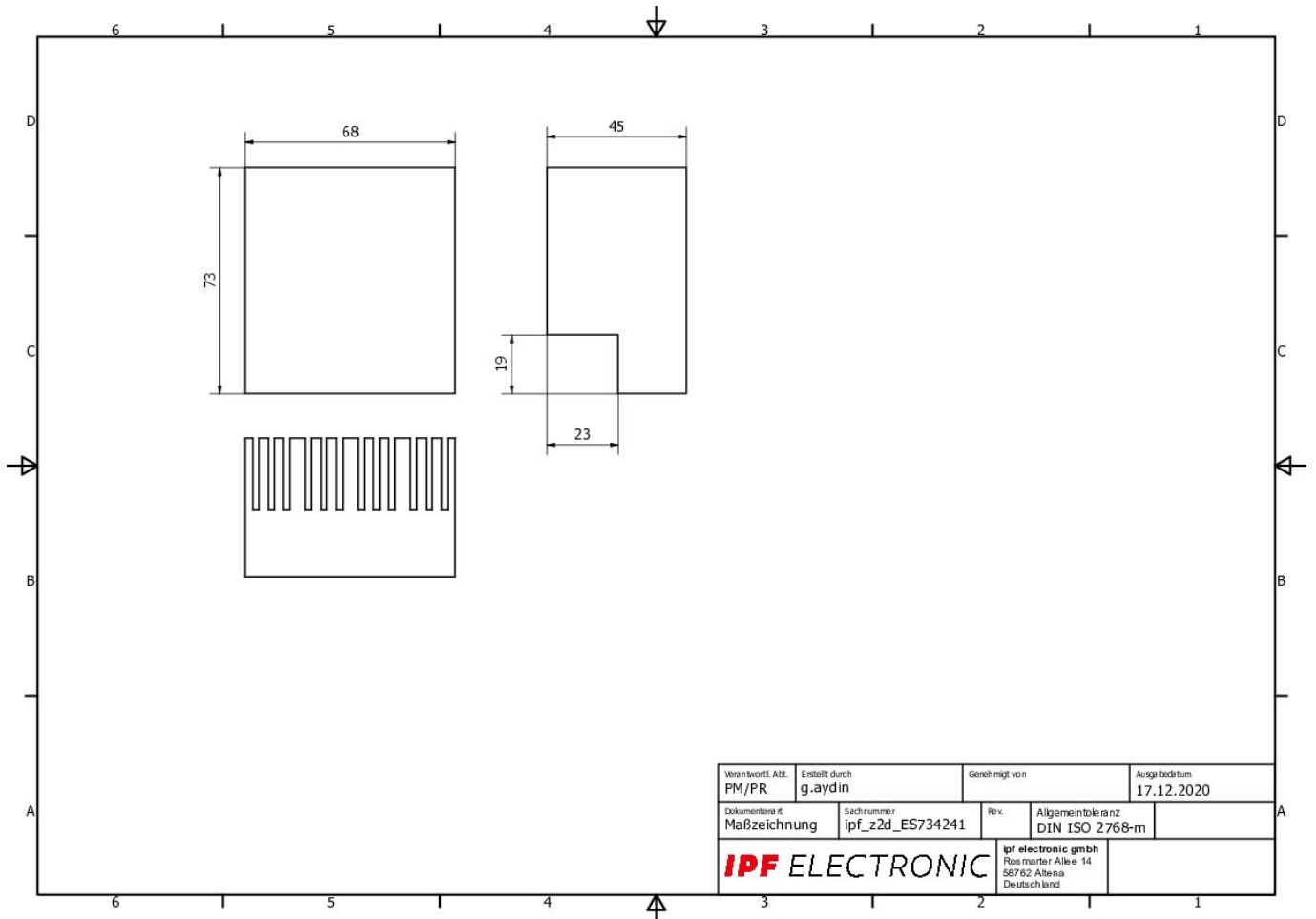
**More**

IPF Product Group	915 camera illumination
packaging dimensions	210 x 138 x 95 mm
gross weight	799 g
Customs tariff number	94054239
WEEE number	40951076
Reach-compliant	Yes
RoHS-compliant	Yes

**Connection**



**Dimensional drawing**



**Installation**

Mounting / installation may only be carried out by a qualified electrician!

**Disposal**

WEEE number according to § 6 para. 3  
ElektroG: 40951076

**Safety warnings**

- / Before initial operation, please make sure to follow all safety instructions that may be provided in the product information.
- / Never use these devices in applications where the safety of a person depends on their functionality.
- / LED lighting systems can generate intensive UV radiation, which can damage your eyes in case of improper use. The manufacturer cannot be held responsible for damages that result from improper use or connection.