

# EY000003

## LED lights • Light strip

LED signal light, 12x16x504mm, RGB, 4.3W, 28 LEDs, operation with controller VY000009, cable connector M12 3-pin, IP50, aluminum+plastic diffuse

including Holder

**/ Multi-segment RGB LED strip**



**Several operational modes that allow individual parameterization via IO-Link  
Start-up and setup is carried out via an IO link master**

The system consisting of LED strips/LED profile lights and a controller with an IO-Link interface offers many options for signaling statuses, time sequences or filling levels.

The LED strip or profile lights can be parameterized in a highly flexible manner via the IO-Link interface integrated in the controller. The corresponding combinations (LED strip/controller or profile lights/controller) are then controlled either via the five digital inputs or an analog signal or integrated into an existing IO-Link environment.

Five possible modes are available for individual parameterization:

1. status display
2. segments
3. level display
4. countdown
5. demo mode

### Electrical features

Type of electrical connection	Cable connector M12
Rated operating current	358 mA
Power	4.3 W
Number of pins	3
Protection class	III
ardSOCA_ElektrischerAnschluss	Cable connector M12 3-pin 0.3m

### Mechanical features

Design	Cuboid
Width	16 mm
Height	12 mm
Cable length	0.3 m
Length	504 mm
Degree of protection (IP)	IP50
Front screen scattering behavior	diffuse
Housing material	Aluminum
Front screen material	Plastic
Ambient temperature	-20 - 50 °C
ardSOCA_Abmessungen	504x16x12mm

**Optical features**

Number of LEDs	28
Lamp	LED
Light source	RGB
Angle of beam spread	110 °
Risk group	1

**Other features**

Average nominal service life	50000 h
------------------------------	---------

**Classification**

ETIM 8
--------

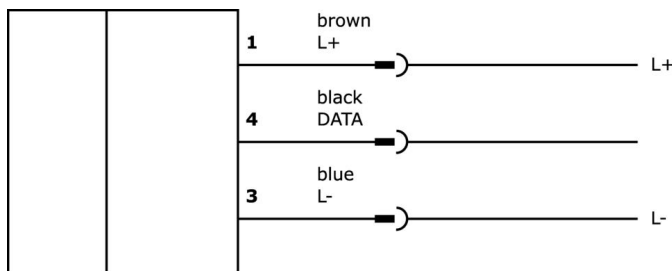
**More**

IPF Product Group	190 machine illuminations
packaging dimensions	560 x 80 x 45 mm
gross weight	160 g
Customs tariff number	94054239
WEEE number	40951076
Reach-compliant	Yes
RoHS-compliant	Yes

**Important notes**

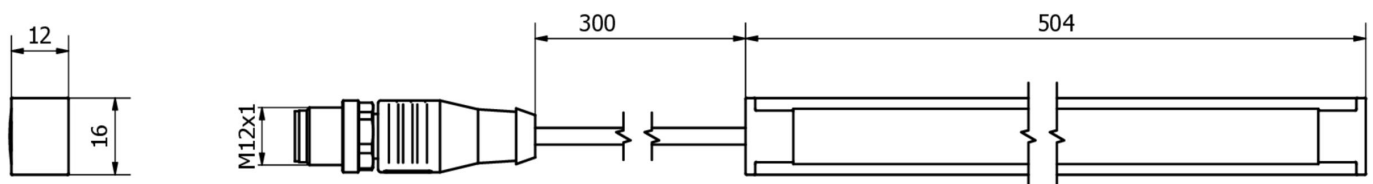
- / Die Länge der Anschlussleitung des LED-Streifens darf 3 m nicht überschreiten.*
- / The potting compound of the article contains silicone*
- / Empfindlich gegenüber elektrostatischer Entladung*
- / Es obligatorio un controlador LED para el funcionamiento. Una alimentación directa con 24VDC destruirá la luminaria.*

**Connection**



ATTENTION: Connection only to LED controller VY000009

**Dimensional drawing**



**Extract accessories program**

**VK030F21**



Connection cable, 0.3m, M12 socket 4-pin angular, M12 connector 4-pin straight, 4x0.34mm<sup>2</sup>, 240V, IP67, suitable for trailing chain and torsion resistant, oils and cooling lubricants, welding area, silicone-free

**VK030F25**



Connection cable, 0.3m, M12 socket 4-pin straight, M12 connector 4-pin straight, 4x0.34mm<sup>2</sup>, PUR (polyurethane), 240V, IP67, suitable for trailing chain and torsion resistant, oils and cooling lubricants, welding area, silicone-free

**VK030F28**



Connection cable, 0.3m, M12 socket 5-pin straight, M12 connector 5-pin straight, 5-core, PUR (polyurethane), suitable for trailing chain and torsion resistant, oils and cooling lubricants, welding area, silicone-free

**VK060F28**



Connection cable, 0.6m, M12 socket 5-pin straight, M12 connector 5-pin straight, 5-core, PUR (polyurethane), suitable for trailing chain and torsion resistant, oils and cooling lubricants, welding area, silicone-free

**AE000045**



Accessories mounting, holder, plastic, 43x22x15mm, packaging unit 2 pieces, for EY000003 and EY000004

**VY000009**



LED control box, 84x71x40mm, control of LED strips, IO-Link, analog, digital, M12 plug connector

You can find further accessories on our homepage



**Installation**

Mounting / installation may only be carried out by a qualified electrician!



**Disposal**

WEEE number according to § 6 para. 3 ElektroG: 40951076

**Safety warnings**

**/** Before initial operation, please make sure to follow all safety instructions that may be provided in the product information.

**/** Never use these devices in applications where the safety of a person depends on their functionality.

**/** LED lighting systems can generate intensive UV radiation, which can damage your eyes in case of improper use. The manufacturer cannot be held responsible for damages that result from improper use or connection.