

## IB06A229

### Inductive sensors • Norm switching distance

sensor inductive, Ø6,5mm 86long, Flush, Sn: 1.5, 10-30V DC, PNP NO, Connector M8 3pin, IP67, Stainless steel 1.4305



The IB06A229 inductive sensor recognizes conductive metals at short distances and is insensitive to other materials, making it ideal for use in soiling and harsh environments. It complies with EN 60947-5-2 and is suitable for standard applications. The switching distance is set at the factory using a norm measuring plate whose edge length corresponds to the diameter of the sensor surface. In accordance with the standard, the IB06A229 flush sensor achieves a switching distance of 1.5mm. The housing of the sensor is made of stainless steel 1.4305 and has a cut-in thread. The electrical connection is made via a 3-pin M8 plug connector.

#### Electrical features

Type of switching function	Normally open contact (NO)
Type of electrical connection	Connector M8
Type of switching output	PNP
Rated switching current	200 mA
Number of pins	3
Switching distance	1,5 mm
Operating voltage (DC)	10 - 30 V

#### Mechanical features

Alignment of cable entry	axial
Design	Cylinder plain
Diameter	6.5 mm
Cable infeed	axial
Length	86 mm
Mechanical mounting condition for sensor	flush
Degree of protection (IP)	IP67
Active area material of sensor	Plastic (PBT)
Housing material	Stainless steel 1.4305
Ambient temperature	-25 - 70 °C

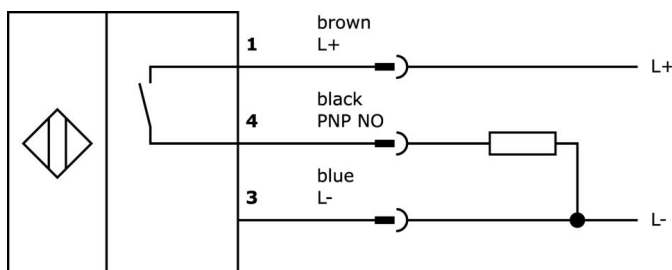
#### Classification

ETIM 8	EC002714 Inductive proximity switch
--------	-------------------------------------

**More**

IPF Product Group	203 inductive sensors (diverse)
packaging dimensions	120 x 100 x 17 mm
gross weight	9 g
Customs tariff number	85365019
WEEE number	40951076
OzDS-compliant	Yes
POP-compliant	Yes
Reach-compliant	Yes
RoHS-compliant	Yes

**Connection**



**Extract accessories program**

**VY030170**

time stage, Turn-off delay, 0-0.15s, 10-35V DC, 1x NO, M8 3pin 0.3m, IP67, Plastic, Potentiometer



**VY030174**

time stage, Turn-off delay, 0-0.15s, 10-35V DC, 1x NO, M8 3pin 0.3m, IP67, Plastic, Potentiometer



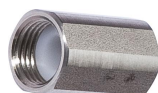
**AY000029**

Accessories Sensor, holder, Ø6. 5mm 20 long



**AY000065**

Accessories Sensor, holder, Ø6. 5mm, stainl. steel



**VK003070**

Cable socket, Angular, Suitable for self-assembly, Soldering connection, Ø3.5-5mm, 4A, 60V, -40-85°C, M8 Female (socket) 3pin, IP67, Brass



**VK003074**

Cable socket, Straight, Suitable for self-assembly, Soldering connection, Ø3.5-5mm, 4A, 60V, -40-85°C, M8 Female (socket) 3pin, IP67, Brass



**VL300138**

Logic module, 26x136x30mm, OR, 2x4fold, 10-30V DC, sensor side M8 Female (socket) 3pin, control side M12 Male (connector) 12pin, IP67, Plastic



**VL300148**

Logic module, 26x136x30mm, AND, 4fold, 10-30V DC, sensor side M8 Female (socket) 3pin, control side M12 Male (connector) 12pin, IP67, Plastic, Signal change logic



**NG400501**

DC power supply, 1-phase, 125x114x40mm, 24-28V, 5A, 90-264V AC 50Hz, 90-264V AC 60Hz, 127-370V DC, screw connection, IP20, aluminum, stabilized, pulsed output voltage



You can find further accessories on our homepage



**Installation**

Mounting / installation may only be carried out by a qualified electrician!



**Disposal**

WEEE number according to § 6 para. 3 ElektroG: 40951076

---

**Safety warnings**

- / Before initial operation, please make sure to follow all safety instructions that may be provided in the product information.
- / Never use these devices in applications where the safety of a person depends on their functionality.