

## IB0801A4

### Inductive sensors • Norm switching distance

sensor inductive, M8x1 16long, Flush, Sn: 1.5, 10-30V DC, PNP NO, Cable 2m PUR (Polyurethane), IP67, Stainless steel 1.4305

including Nut



The IB0801A4 inductive sensor is specially designed for use in soiling areas and harsh environmental conditions. It recognizes conductive metals at short distances and is not affected by other materials. The sensor complies with EN 60947-5-2 and is suitable for standard applications.

The switching distance of the sensor is set at the factory using a norm measuring plate whose edge length corresponds to the diameter of the sensor surface. In accordance with the standard, the flush-mounted sensor achieves a switching distance of 1.5mm. The cylindrical housing of the sensor is made of stainless steel 1.4305 and has an M8x1mm thread. The electrical connection is made via a 3-wire 2m connection cable.

#### Electrical features

Display	LED display
Type of switching function	Normally open contact (NO)
Type of electrical connection	Cable
Type of switching output	PNP
Rated switching current	200 mA
Relative hysteresis	15 %
Correction factor (aluminum)	0.3
Correction factor (copper)	0.2
Correction factor (brass)	0.4
Correction factor (St37)	1
Correction factor (stainl. steel)	0.7
Short-circuit protection	Yes
No-load current	15 mA
Relative repeat accuracy	10 %
Switching distance	1,5 mm
Switching frequency	1000 Hz
Voltage drop	2 V
Reverse polarity protection	Yes
Operating voltage (DC)	10 - 30 V

**Mechanical features**

Number of cores	3
Alignment of cable entry	axial
Design	Cylinder, screw-thread
Thread length	16 mm
Thread pitch	1 mm
Cable length	2 m
Cable infeed	axial
Length	16 mm
Mechanical mounting condition for sensor	flush
Degree of protection (IP)	IP67
Active area material of sensor	Plastic (PBT)
Housing material	Stainless steel 1.4305
Material of cable sheath	Plastic (PUR)
Thread dimension	M8
Ambient temperature	-25 - 70 °C
Line diameter	3.5 mm

**Other features**

Reference medium / object	Standard measuring plate FE360 8x8x1mm
---------------------------	--

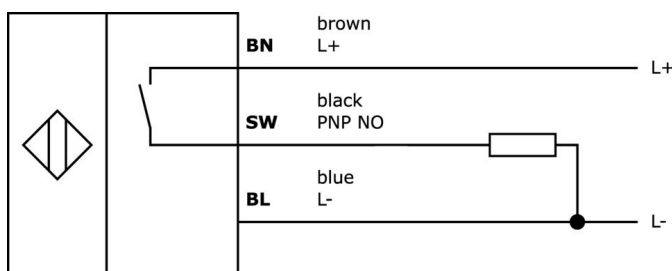
**Classification**

ETIM 8	EC002714 Inductive proximity switch
--------	-------------------------------------

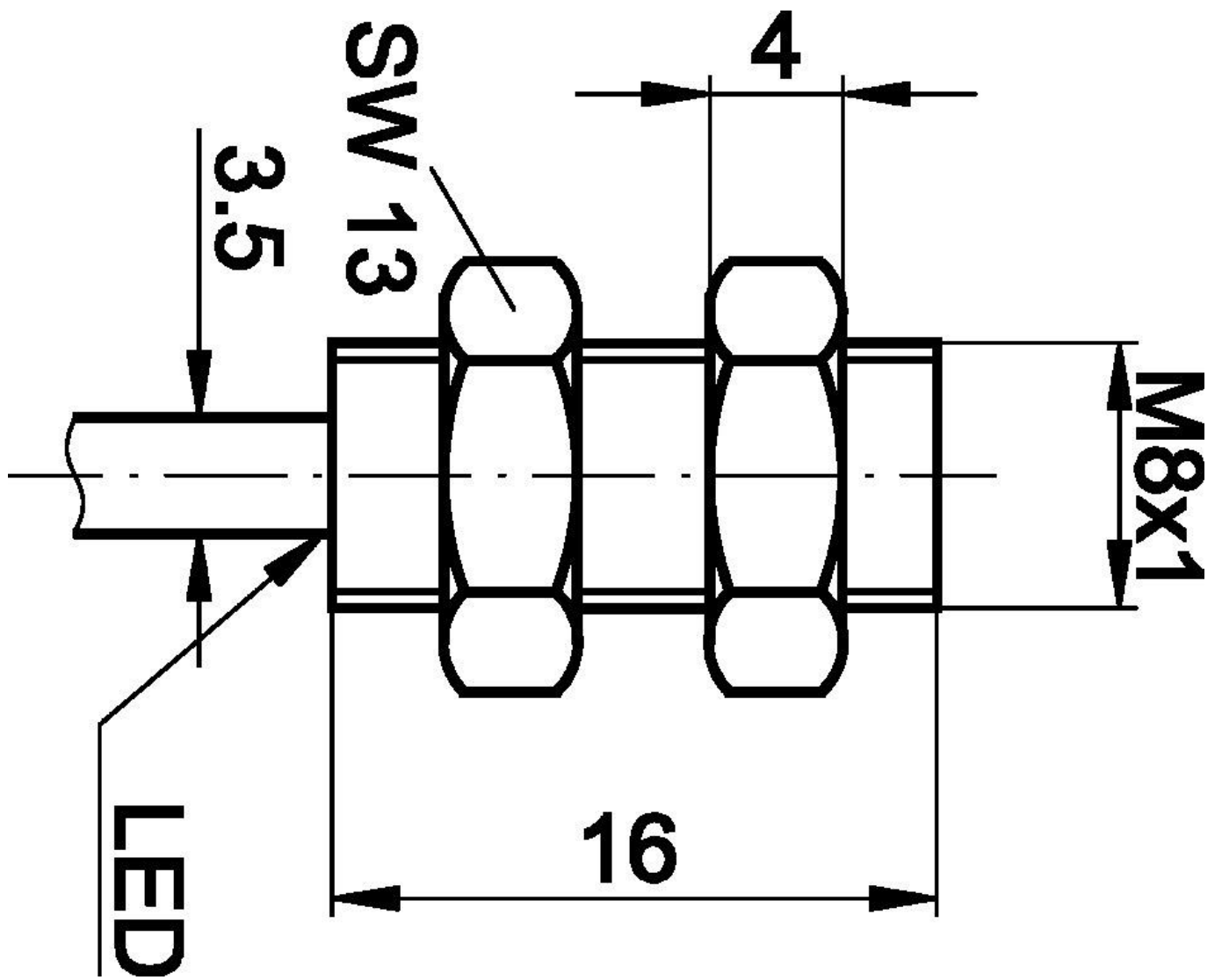
**More**

IPF Product Group	200 inductive sensors
packaging dimensions	120 x 100 x 17 mm
gross weight	35 g
Customs tariff number	85365019
WEEE number	40951076
OzDS-compliant	Yes
POP-compliant	Yes
Reach-compliant	Yes
RoHS-compliant	Yes

**Connection**



Dimensional drawing



**Extract accessories program**

**AY000141**



Plastic sheath, Ø17mm, Inner diameter 10mm, -40-250°C, Glass fiber with silicone rubber, Short-term resistance to weld spatter 1200°C, Tensile strength 400N, Flexible, Flame retardant, yard good

**VY000004**



DC power supply, sensor tester, 120x26x72mm, 18V, 0.04A, Spring clamp connection 4pin, IP20, Plastic

**VK003076**



Cable connector, Angular, Suitable for self-assembly, Soldering connection, 4A, 60V, -40-85°C, M8 Male (connector) 3pin, IP67, Brass

**VK003078**



Cable connector, Straight, Suitable for self-assembly, Soldering connection, Ø3.5-5mm, 4A, 60V, -40-85°C, M8 Male (connector) 3pin, IP67, Brass

**VK003079**



Cable connector, Straight, Suitable for self-assembly, Soldering connection, Ø3.5-5mm, 4A, 30V, -40-85°C, M8 Male (connector) 4pin, IP67, Brass

**VK003179**



Cable connector, Straight, Suitable for self-assembly, Screw connection, Ø3.5-5mm, 4A, 30V, -40-85°C, M8 Male (connector) 4pin, IP67, Brass

**VK003026**



Cable connector, Angular, Suitable for self-assembly, Screw connection, Ø3-6.5mm, 4A, 240V, -25-90°C, M12 Male (connector) 4pin, IP67, PBT

**VK003028**



Cable connector, Straight, Suitable for self-assembly, Screw connection, Ø3-6.5mm, 4A, 240V, -25-90°C, M12 Male (connector) 4pin, IP67, PBT

**AY000115**



accessories sensor, Fixture kit, Metal, ball joint

You can find further accessories on our homepage



**Installation**

Mounting / installation may only be carried out by a qualified electrician!



**Disposal**

WEEE number according to § 6 para. 3 ElektroG: 40951076

**Safety warnings**

/ Before initial operation, please make sure to follow all safety instructions that may be provided in the product information.

/ Never use these devices in applications where the safety of a person depends on their functionality.