

## IB090100

### Inductive sensors • Norm switching distance

sensor inductive, 40x8x8mm, Flush, Sn: 1.5, 10-30V DC, PNP NO, Cable 2m PVC, IP67, Brass Nickel-plated



The IB090100 inductive sensor recognizes conductive metals at short distances and is insensitive to other materials, making it ideal for use in soiling and harsh environments. The sensor complies with EN 60947-5-2 and is suitable for standard applications. The switching distance of 1.5 mm is set at the factory using a norm measuring plate. The housing of the sensor is made of brass with an incised thread and has a cuboid shape. The sensor has a 3-wire, 2 m long connection cable for the electrical connection.

#### Electrical features

Display	LED display
Type of switching function	Normally open contact (NO)
Type of electrical connection	Cable
Type of switching output	PNP
Rated switching current	200 mA
Relative hysteresis	5 %
Short-circuit protection	Yes
No-load current	10 mA
Switching distance	1,5 mm
Switching frequency	1000 Hz
Voltage drop	2 V
Reverse polarity protection	Yes
Operating voltage (DC)	10 - 30 V

**Mechanical features**

Number of cores	3
Design	Cuboid
Width	8 mm
Height	40 mm
Cable length	2 m
Cable infeed	axial
Length	8 mm
Maximum tightening torque	1 Nm
Mechanical mounting condition for sensor	flush
Surface	nickel-plated
Degree of protection (IP)	IP67
Active area material of sensor	Plastic (PA6.1, glass fiber reinforced 15%)
Housing material	Brass
Material of cable sheath	Plastic (PVC)
Ambient temperature	-25 - 70 °C
Line diameter	3.5 mm

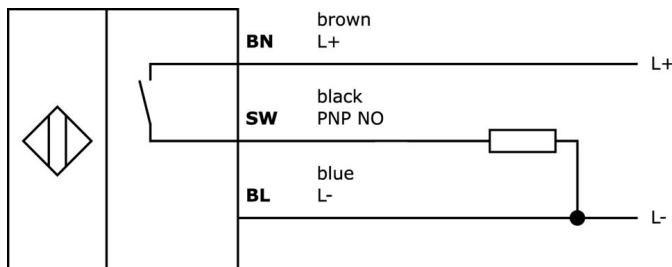
**Classification**

ETIM 8	EC002714 Inductive proximity switch
--------	-------------------------------------

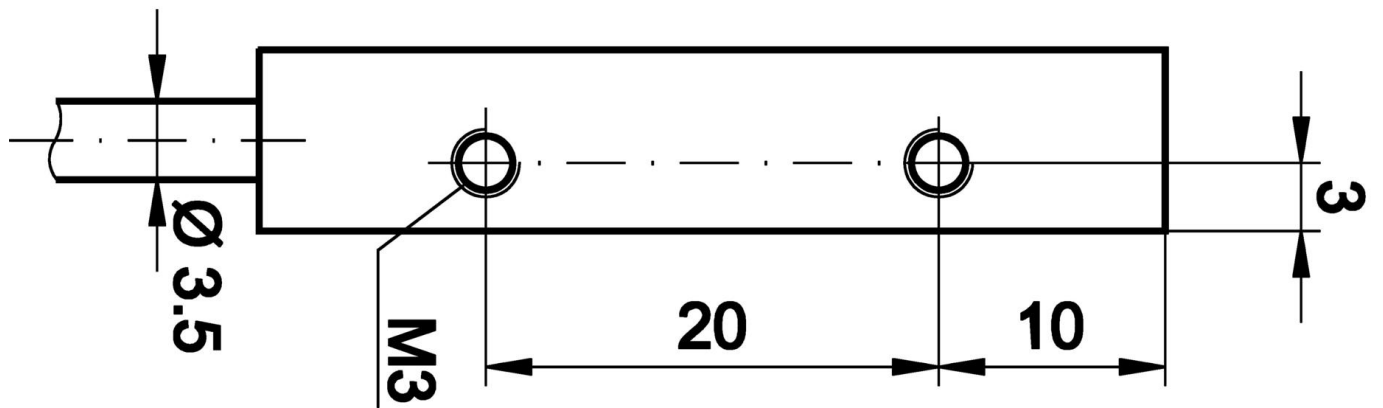
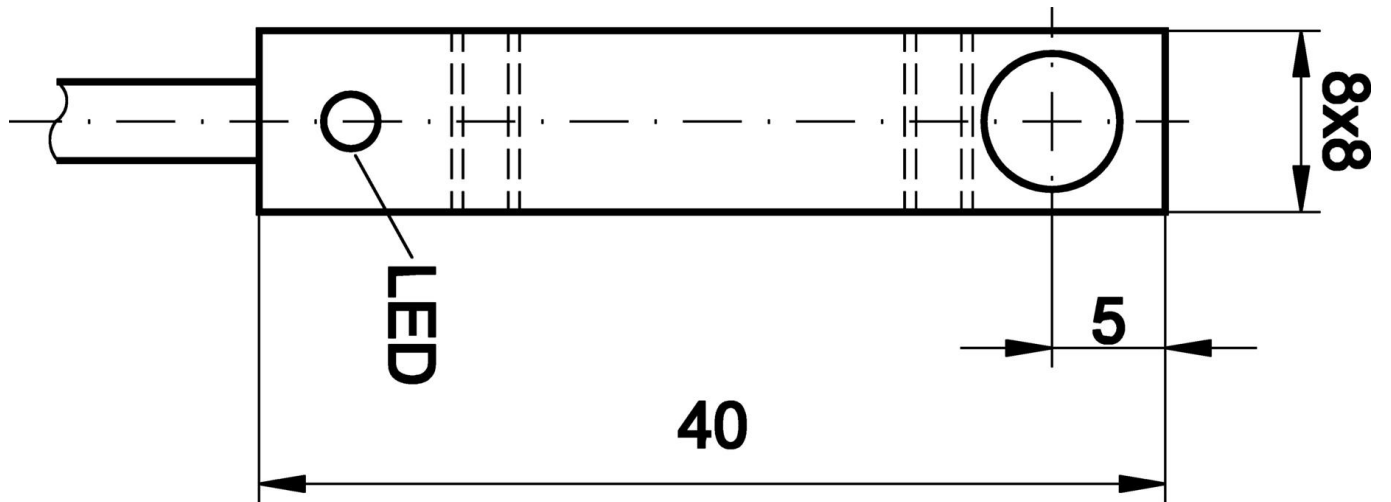
**More**

IPF Product Group	215 inductive sensors (cuboid)
packaging dimensions	200 x 150 x 17 mm
gross weight	50 g
Customs tariff number	85365019
WEEE number	40951076
OzDS-compliant	Yes
POP-compliant	Yes
Reach-compliant	Yes
RoHS-compliant	Yes

**Connection**



Dimensional drawing



**Extract accessories program**

**NG400501**



DC power supply, 1-phase, 125x114x40mm, 24-28V, 5A, 90-264V AC 50Hz, 90-264V AC 60Hz, 127-370V DC, screw connection, IP20, aluminum, stabilized, pulsed output voltage

**VK003076**



Cable connector, Angular, Suitable for self-assembly, Soldering connection, 4A, 60V, -40-85°C, M8 Male (connector) 3pin, IP67, Brass

**VK003078**



Cable connector, Straight, Suitable for self-assembly, Soldering connection, Ø3.5-5mm, 4A, 60V, -40-85°C, M8 Male (connector) 3pin, IP67, Brass

**VK003079**



Cable connector, Straight, Suitable for self-assembly, Soldering connection, Ø3.5-5mm, 4A, 30V, -40-85°C, M8 Male (connector) 4pin, IP67, Brass

**VK003179**



Cable connector, Straight, Suitable for self-assembly, Screw connection, Ø3.5-5mm, 4A, 30V, -40-85°C, M8 Male (connector) 4pin, IP67, Brass

**VK003026**



Cable connector, Angular, Suitable for self-assembly, Screw connection, Ø3-6.5mm, 4A, 240V, -25-90°C, M12 Male (connector) 4pin, IP67, PBT

**VK003028**



Cable connector, Straight, Suitable for self-assembly, Screw connection, Ø3-6.5mm, 4A, 240V, -25-90°C, M12 Male (connector) 4pin, IP67, PBT

**AY000118**



accessories sensor, Fixture kit, Metal, ball joint

**AY000162**



Accessories, magnetic, Ø43mm, neodymium-iron-boron, inside thread M5, rubber

You can find further accessories on our homepage



**Installation**

Mounting / installation may only be carried out by a qualified electrician!



**Disposal**

WEEE number according to § 6 para. 3 ElektroG: 40951076

**Safety warnings**

/ Before initial operation, please make sure to follow all safety instructions that may be provided in the product information.

/ Never use these devices in applications where the safety of a person depends on their functionality.