

IB090106

Inductive sensors • Increased switching distance

sensor inductive, 40x8x8mm, Flush, Sn: 3, 10-30V DC, PNP NO, Cable 2m PVC, IP67, Zamak Chrome-plated



Inductive proximity switches are contact-free sensors. They detect all conductive metals, regardless of whether they move or not. The achievable sensing range of the devices depends on the object material and its dimensions. The vibration-resistant sensors can be approached laterally or frontally. Inductive proximity switches are used for presence detection (e.g. goods carriers), positioning (e.g. dampers), counting (e.g. nuts /bolts), speed detection (e.g. for cog wheels), on conveyor systems (e.g. hose feedings) or distance measurements (e.g. press-in checking) of metallic objects.

Electrical features

Display	LED display
Type of switching function	Normally open contact (NO)
Type of electrical connection	Cable
Type of switching output	PNP
Rated switching current	200 mA
Relative hysteresis	10 %
Short-circuit protection	Yes
No-load current	10 mA
Switching distance	3 mm
Switching frequency	1000 Hz
Voltage drop	2 V
Reverse polarity protection	Yes
Operating voltage (DC)	10 - 30 V

Mechanical features

Number of cores	3
Design	Cuboid
Width	8 mm
Height	40 mm
Cable length	2 m
Cable infeed	axial
Length	8 mm
Maximum tightening torque	1 Nm
Mechanical mounting condition for sensor	flush
Surface	Chrome-plated
Degree of protection (IP)	IP67
Active area material of sensor	Plastic (PBTP)
Housing material	Zamak
Material of cable sheath	Plastic (PVC)
Ambient temperature	-25 - 70 °C
Line diameter	3.5 mm

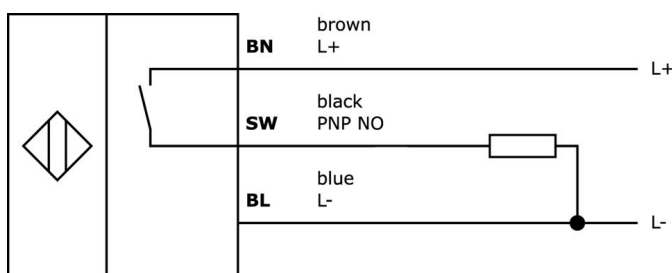
Classification

ETIM 8	EC002714 Inductive proximity switch
--------	-------------------------------------

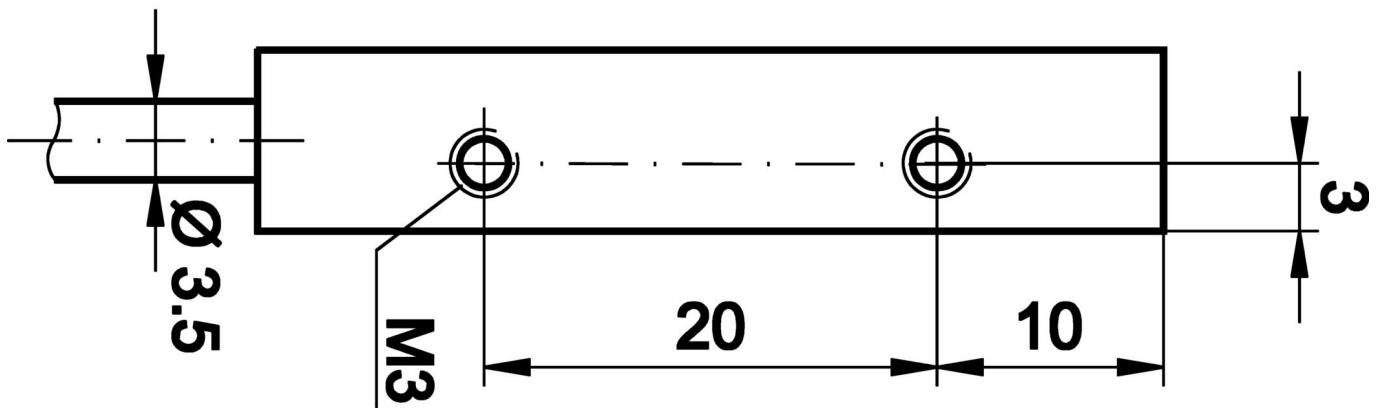
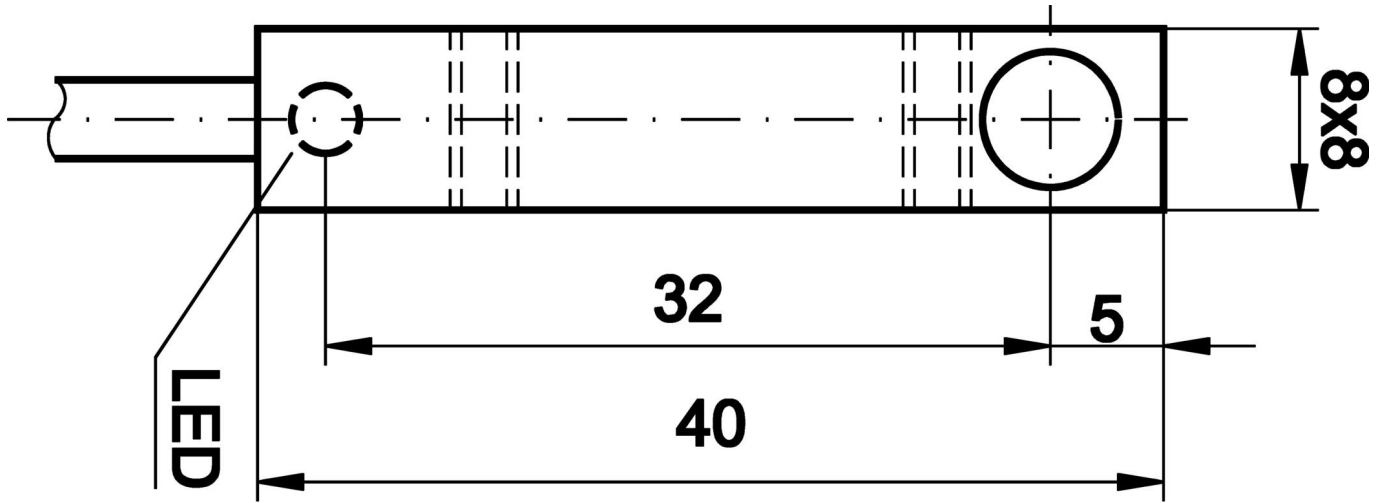
More

IPF Product Group	201 inductive sensors (plus / super plus)
packaging dimensions	215 x 180 x 17 mm
gross weight	50 g
Customs tariff number	85365019
WEEE number	40951076
Reach-compliant	Yes
RoHS-compliant	Yes

Connection



Dimensional drawing



Extract accessories program

VL250100



Logic module, 49x80x26mm, AND, 4fold, 10-35V DC, sensor side
Clamp, control side Clamp, IP40, Plastic

VL250120



Logic module, 49x80x26mm, OR, 4fold, 10-35V DC, sensor side
Clamp, control side Clamp, IP40, Plastic

VK003026



Cable connector, Angular, Suitable for self-assembly, Screw connection, Ø3-6.5mm, 4A, 240V, -25-90°C, M12 Male (connector) 4pin, IP67, PBT

VK003028



Cable connector, Straight, Suitable for self-assembly, Screw connection, Ø3-6.5mm, 4A, 240V, -25-90°C, M12 Male (connector) 4pin, IP67, PBT

VK003076



Cable connector, Angular, Suitable for self-assembly, Soldering connection, 4A, 60V, -40-85°C, M8 Male (connector) 3pin, IP67, Brass

VK003078



Cable connector, Straight, Suitable for self-assembly, Soldering connection, Ø3.5-5mm, 4A, 60V, -40-85°C, M8 Male (connector) 3pin, IP67, Brass

AY000118



accessories sensor, Fixture kit, Metal, ball joint

AY000162



Accessories, magnetic, Ø43mm, neodymium-iron-boron, inside thread M5, rubber

VK003079



Cable connector, Straight, Suitable for self-assembly, Soldering connection, Ø3.5-5mm, 4A, 30V, -40-85°C, M8 Male (connector) 4pin, IP67, Brass

You can find further accessories on our homepage



Installation

Mounting / installation may only be carried out by a qualified electrician!



Disposal

WEEE number according to § 6 para. 3 ElektroG: 40951076

Safety warnings

- / Before initial operation, please make sure to follow all safety instructions that may be provided in the product information.
- / Never use these devices in applications where the safety of a person depends on their functionality.