

## IB090200

### Inductive sensors • Norm switching distance

sensor inductive, 40x8x8mm, Flush, Sn: 1.5, 10-30V DC, PNP NC, Cable 2m PVC, IP67, Zinc die-cast Nickel-plated



The IB090200 inductive sensor is manufactured in accordance with EN 60947-5-2 and is suitable for standard applications. It recognizes conductive metals at short distances and is not affected by other materials, making it ideal for use in soiling and harsh environments.

The sensor has a flush-mountable switching distance of 1.5mm, which is set at the factory using a norm measuring plate. The housing of the sensor is cuboid and made of zinc diecast with a cut-in thread. The electrical connection is made via a 3-wire 2m connection cable.

#### Electrical features

|                               |                              |
|-------------------------------|------------------------------|
| Type of switching function    | Normally closed contact (NC) |
| Type of electrical connection | Cable                        |
| Type of switching output      | PNP                          |
| Rated switching current       | 200 mA                       |
| Relative hysteresis           | 5 %                          |
| Short-circuit protection      | Yes                          |
| No-load current               | 10 mA                        |
| Switching distance            | 1,5 mm                       |
| Switching frequency           | 1000 Hz                      |
| Voltage drop                  | 2 V                          |
| Reverse polarity protection   | Yes                          |
| Operating voltage (DC)        | 10 - 30 V                    |

**Mechanical features**

|  |   |
|--|---|
| Design                                   | Cuboid                                      |
| Width                                    | 8 mm  |
| Height                                   | 40 mm                                       |
| Cable length                             | 2 m   |
| Cable infeed                             | axial                                       |
| Length                                   | 8 mm  |
| Maximum tightening torque                | 1 Nm  |
| Mechanical mounting condition for sensor | flush                                       |
| Surface                                  | nickel-plated                               |
| Degree of protection (IP)                | IP67  |
| Active area material of sensor           | Plastic (PA6.1, glass fiber reinforced 15%) |
| Housing material                         | Zinc die-cast                               |
| Material of cable sheath                 | Plastic (PVC)                               |
| Ambient temperature                      | -25 - 70 °C                                 |
| Line diameter                            | 3.5 mm                                      |

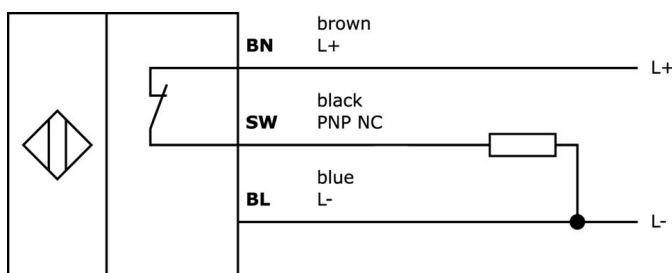
**Classification**

|        |                                     |
|--------|-------------------------------------|
| ETIM 8 | EC002714 Inductive proximity switch |
|--------|-------------------------------------|

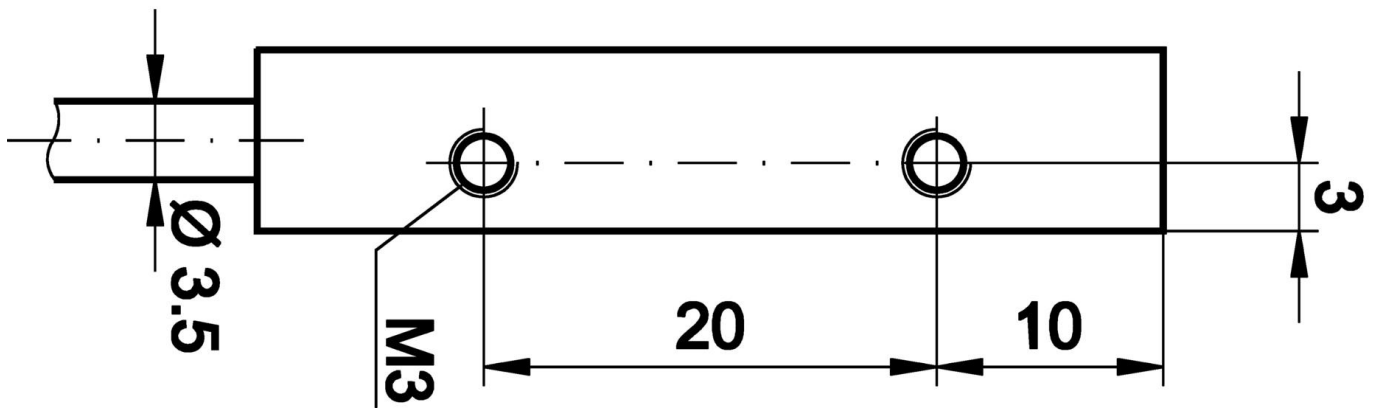
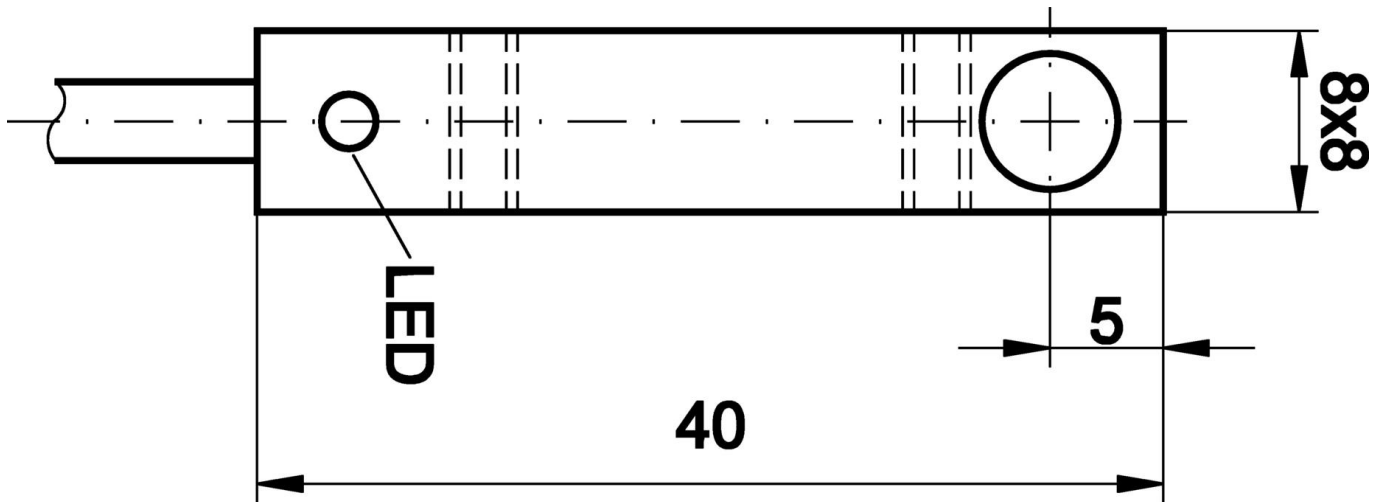
**More**

|                       |                                |
|-----------------------|--------------------------------|
| IPF Product Group     | 215 inductive sensors (cuboid) |
| packaging dimensions  | 120 x 100 x 20 mm              |
| gross weight          | 40 g                           |
| Customs tariff number | 85365019                       |
| WEEE number           | 40951076                       |
| OzDS-compliant        | Yes                            |
| POP-compliant         | Yes                            |
| Reach-compliant       | Yes                            |
| RoHS-compliant        | Yes                            |

**Connection**



Dimensional drawing



**Extract accessories program**

**AY000141**



Plastic sheath, Ø17mm, Inner diameter 10mm, -40-250°C, Glass fiber with silicone rubber, Short-term resistance to weld spatter 1200°C, Tensile strength 400N, Flexible, Flame retardant, yard good

**VK003079**



Cable connector, Straight, Suitable for self-assembly, Soldering connection, Ø3.5-5mm, 4A, 30V, -40-85°C, M8 Male (connector) 4pin, IP67, Brass

**VK003179**



Cable connector, Straight, Suitable for self-assembly, Screw connection, Ø3.5-5mm, 4A, 30V, -40-85°C, M8 Male (connector) 4pin, IP67, Brass

**VK003026**



Cable connector, Angular, Suitable for self-assembly, Screw connection, Ø3-6.5mm, 4A, 240V, -25-90°C, M12 Male (connector) 4pin, IP67, PBT

**VK003028**



Cable connector, Straight, Suitable for self-assembly, Screw connection, Ø3-6.5mm, 4A, 240V, -25-90°C, M12 Male (connector) 4pin, IP67, PBT

**VK003076**



Cable connector, Angular, Suitable for self-assembly, Soldering connection, 4A, 60V, -40-85°C, M8 Male (connector) 3pin, IP67, Brass

**VK003078**



Cable connector, Straight, Suitable for self-assembly, Soldering connection, Ø3.5-5mm, 4A, 60V, -40-85°C, M8 Male (connector) 3pin, IP67, Brass

**AY000118**



accessories sensor, Fixture kit, Metal, ball joint

**AY000162**



Accessories, magnetic, Ø43mm, neodymium-iron-boron, inside thread M5, rubber

You can find further accessories on our homepage



**Installation**

Mounting / installation may only be carried out by a qualified electrician!



**Disposal**

WEEE number according to § 6 para. 3 ElektroG: 40951076

**Safety warnings**

- / Before initial operation, please make sure to follow all safety instructions that may be provided in the product information.
- / Never use these devices in applications where the safety of a person depends on their functionality.