

IB120174

Inductive sensors • Norm switching distance

sensor inductive, M12x1 44long, Flush, Sn: 3, 10-30V DC, PNP NO, Connector M8 3pin, IP67, Brass Nickel-plated

including Nut



The IB120174 inductive sensor is specially designed for use in soiling environments and harsh conditions. It recognizes conductive metals at short distances and is not affected by other materials. Manufactured according to EN 60947-5-2 standards, this sensor is suitable for all standard applications.

The switching distance of the flush sensor is 3 mm according to the norm measuring plate. Its housing is made of brass and has an M12x1mm thread. The sensor is electrically connected via a 3-pin M8 connector.

Electrical features

Display	LED display
Type of switching function	Normally open contact (NO)
Type of electrical connection	Connector M8
Type of switching output	PNP
Rated switching current	200 mA
Relative hysteresis	15 %
Correction factor (aluminum)	0.3
Correction factor (copper)	0.2
Correction factor (brass)	0.4
Correction factor (St37)	1
Correction factor (stainl. steel)	0.7
Short-circuit protection	Yes
No-load current	15 mA
Number of pins	3
Relative repeat accuracy	10 %
Switching distance	3 mm
Switching frequency	800 Hz
Voltage drop	2 V
Reverse polarity protection	Yes
Operating voltage (DC)	10 - 30 V

Mechanical features

Alignment of cable entry	axial
Design	Cylinder, screw-thread
Thread length	24 mm
Thread pitch	1 mm
Cable infeed	axial
Length	44 mm
Mechanical mounting condition for sensor	flush
Surface	nickel-plated
Degree of protection (IP)	IP67
Active area material of sensor	Plastic (PBT)
Housing material	Brass
Thread dimension	M12
Ambient temperature	-25 - 70 °C

Other features

Reference medium / object	Standard measuring plate FE360 12x12x1mm
---------------------------	--

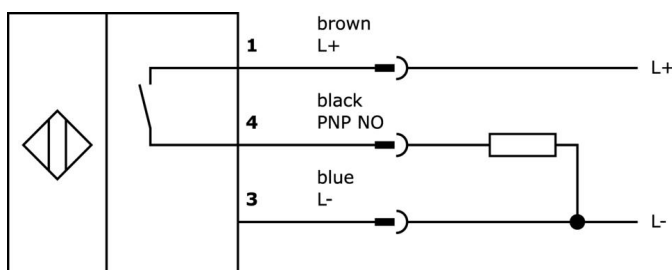
Classification

ETIM 8	EC002714 Inductive proximity switch
--------	-------------------------------------

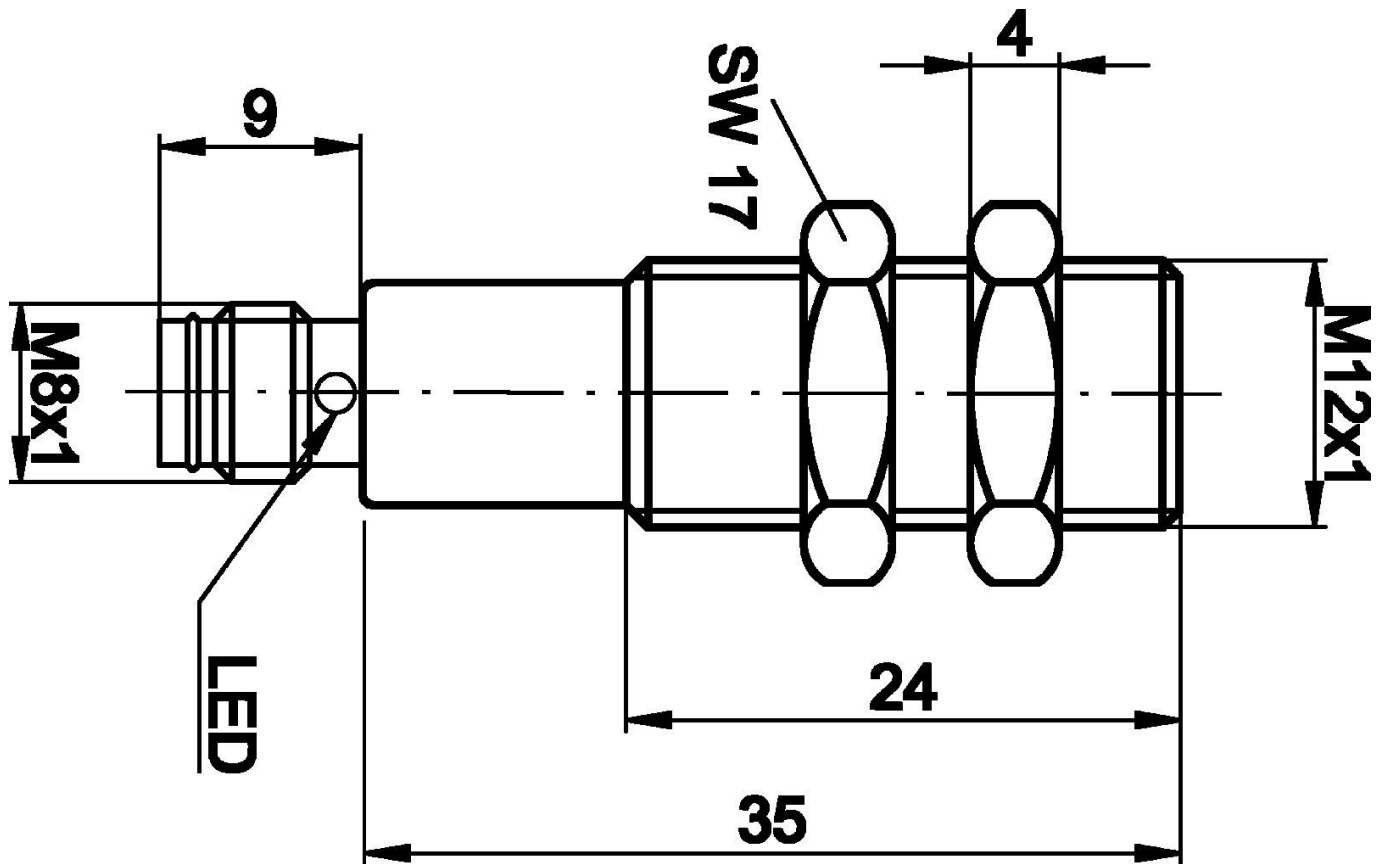
More

IPF Product Group	200 inductive sensors
packaging dimensions	120 x 100 x 30 mm
gross weight	23 g
Customs tariff number	85365019
WEEE number	40951076
OzDS-compliant	Yes
POP-compliant	Yes
Reach-compliant	Yes
RoHS-compliant	Yes

Connection



Dimensional drawing



Extract accessories program

AY000115



accessories sensor, Fixture kit,
Metal, ball joint

AY000162



Accessories, magnetic, Ø43mm,
neodymium-iron-boron, inside
thread M5, rubber

AY000156



accessories sensor, Clamp sleeve,
M16x1 31long, Brass White bronze

VK030F70



Connection cable, 0.3m, M8
socket 3-pin angular, M8
connector 3-pin straight, 3x0.
34mm², PUR (polyurethane), 60V,
IP67, suitable for trailing chain and
torsion resistant, oils and cooling
lubricants, welding area, silicone-
free

VK030F74



Connection cable, 0.3m, M8
socket 3-pin straight, M8
connector 3-pin straight, 3x0.
34mm², PUR (polyurethane), 60V,
IP67, suitable for trailing chain and
torsion resistant, oils and cooling
lubricants, welding area, silicone-
free

VK200271



Connection cable, 2m, M8 Female
(socket) 3pin Angular, Free
conductor end, 3x0.34mm², PUR
(Polyurethane), Ø4.3mm, -30-
90°C, IP67, With LED display,
Suitable for trailing chain and
torsion resistant, Oil and cooling
lubricants, Welding area, Silico...

VK500271



Connection cable, 5m, M8 Female
(socket) 3pin Angular, Free
conductor end 3pin, 3x0.34mm²,
PUR (Polyurethane), Ø4.3mm, -30-
90°C, IP67, With LED display,
Suitable for trailing chain and
torsion resistant, Oil and cooling
lubricants, Welding area, S...

AY000159



accessories sensor, Mounting
pipe, Ø12mm 200long, Aluminum
Anodised

VK200071



Connection cable, 2m, M8 Female
(socket) 3pin Angular, Free
conductor end, 3x0.34mm², PUR
(Polyurethane), Ø4.3mm, 60V, -
40-90°C, IP67, TPU, Suitable for
trailing chain and torsion resistant,
Oil and cooling lubricants, Welding
area, Silicone-free

You can find further accessories on our homepage



Installation

Mounting / installation may only be carried
out by a qualified electrician!



Disposal

WEEE number according to § 6 para. 3
ElektroG: 40951076

Safety warnings

/ Before initial operation, please make sure to follow all safety instructions that may be provided in the product information.

/ Never use these devices in applications where the safety of a person depends on their functionality.