

## IBR40106

### Inductive sensors • Increased switching distance

Sensor inductive, Ø4mm 25long, flush, Sn: 1.5, 10-30V DC, PNP NO, IO-Link, cable tail 5m PUR (polyurethane), IP67, V4A



Inductive proximity switches are contact-free sensors. They detect all conductive metals, regardless of whether they move or not. The achievable sensing range of the devices depends on the object material and its dimensions. The vibration-resistant sensors can be approached laterally or frontally. Inductive proximity switches are used for presence detection (e.g. goods carriers), positioning (e.g. dampers), counting (e.g. nuts /bolts), speed detection (e.g. for cog wheels), on conveyor systems (e.g. hose feedings) or distance measurements (e.g. press-in checking) of metallic objects.

#### Electrical features

Display	LED display
Type of switching function	Normally open contact (NO)
Type of electrical connection	Cable
Type of switching output	PNP
Rated switching current	200 mA
Relative hysteresis	10 %
Correction factor (aluminum)	0.4
Correction factor (copper)	0.4
Correction factor (brass)	0.5
Correction factor (St37)	1
Correction factor (stainl. steel)	0.75
Short-circuit protection	Yes
No-load current	10 mA
Relative repeat accuracy	2 %
Switching distance	1,5 mm
Switching frequency	3000 Hz
Voltage drop	2 V
Reverse polarity protection	Yes
Supported communication interface	IO-Link
Operating voltage (DC)	10 - 30 V

**Mechanical features**

Alignment of cable entry	axial
Design	Cylinder plain
Diameter	4 mm
Cable length	5 m
Cable infeed	axial
Length	25 mm
Mechanical mounting condition for sensor	flush
Degree of protection (IP)	IP67
Active area material of sensor	Plastic (POM)
Housing material	Stainless steel (V2A)
Material of cable sheath	Plastic (PUR)
Ambient temperature	-25 - 70 °C
Line diameter	3.5 mm

**Other features**

IO-Link version	V1.0.1
Reference medium / object	Standard measuring plate FE360 4,5x4,5x1mm

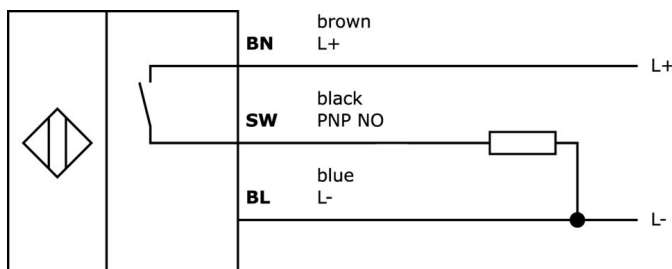
**Classification**

ETIM 8	EC002714 Inductive proximity switch
--------	-------------------------------------

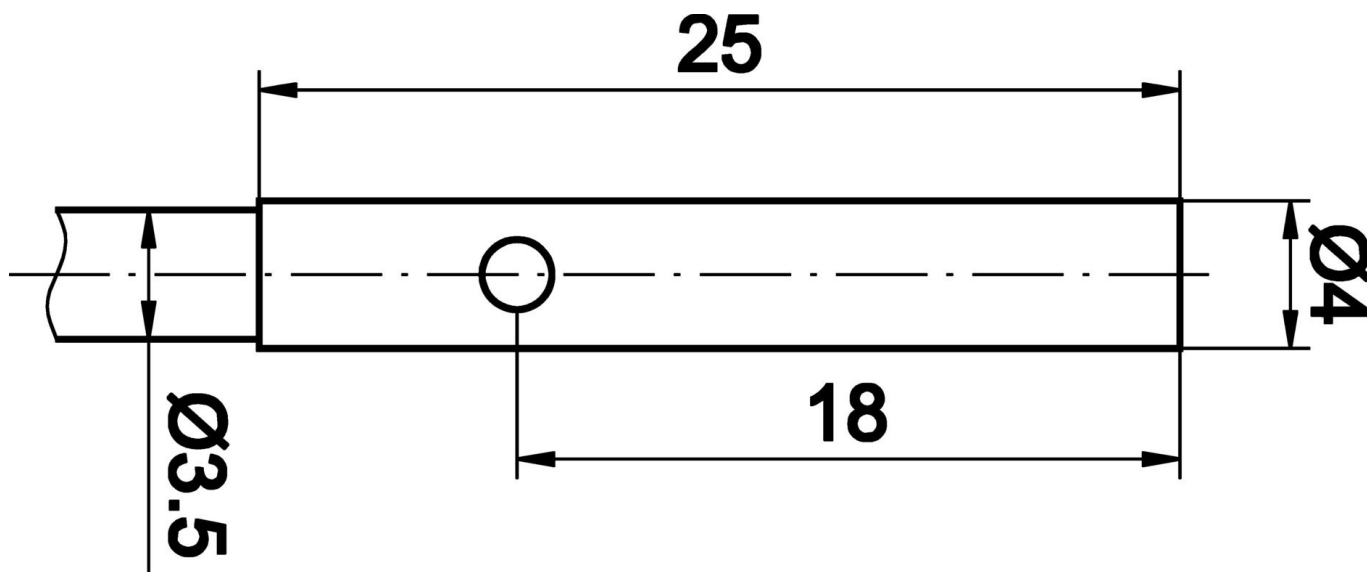
**More**

IPF Product Group	201 inductive sensors (plus / super plus)
packaging dimensions	215 x 180 x 25 mm
gross weight	80 g
Customs tariff number	85365019
WEEE number	40951076
Reach-compliant	Yes
RoHS-compliant	Yes

**Connection**



**Dimensional drawing**



**Extract accessories program**

**AY000017**



accessories sensor, Ø4mm, Aluminum, For sensor 4mm, for Wall mounting, Screw mounting

**AY000044**



accessories sensor, Ø4mm, Plastic, For sensor 4mm, for Wall mounting, Screw mounting

**AY000141**



Plastic sheath, Ø17mm, Inner diameter 10mm, -40-250°C, Glass fiber with silicone rubber, Short-term resistance to weld spatter 1200°C, Tensile strength 400N, Flexible, Flame retardant, yard good

**VY000005**



IO-Link master, 41x24x67mm, IO-Link, M12, With USB interface

**VL250100**



Logic module, 49x80x26mm, AND, 4fold, 10-35V DC, sensor side Clamp, control side Clamp, IP40, Plastic

**VL250120**



Logic module, 49x80x26mm, OR, 4fold, 10-35V DC, sensor side Clamp, control side Clamp, IP40, Plastic

**VY000004**



DC power supply, sensor tester, 120x26x72mm, 18V, 0.04A, Spring clamp connection 4pin, IP20, Plastic

**NG530002**



DC power supply, single-phase, 99x114x22mm, 24V, 0.1A, Number of relay outputs 2, 100-264V AC 50Hz, 100-264V AC 60Hz, Screw connection, IP20, Plastic, Stabilized, Output voltage, pulsed

**VY850001**



Inverter/signal-inversion/turn-off delay, 85x65x18mm, 0.01-10s, 12-30V DC, 1x NC/NO, Clamp 8pin, IP40, Plastic, Plug-in jumpers

You can find further accessories on our homepage



**Installation**

Mounting / installation may only be carried out by a qualified electrician!



**Disposal**

WEEE number according to § 6 para. 3 ElektroG: 40951076

---

**Safety warnings**

- /** Before initial operation, please make sure to follow all safety instructions that may be provided in the product information.
- /** Never use these devices in applications where the safety of a person depends on their functionality.
- /** Any software, drivers or IODD files that may be required to operate your device can be downloaded free of charge from our homepage: [www.ipf-electronic.com](http://www.ipf-electronic.com)