

## IN506050

### Inductive sensors • Increased ambient temperature

Sensor inductive, M50x1.5 64long, non-flush, Sn: 25, 0-230°C, connection to amplifier, M12 connector 3m PTFE, IP50, VA

including Nut



Inductive proximity switches are contactless sensors. They detect all conductive metals, regardless of whether they are moving or not. The switching distance that the devices can achieve depends on the object material and its dimensions. The vibration-resistant sensors can be approached laterally or from the front. Inductive proximity switches are used for presence detection (e.g. goods carriers), positioning (e.g. oven flaps), counting (e.g. nuts / screws), speed detection (e.g. on gear wheels), on conveyor systems (e.g. hose feeds) or distance measurement (e.g. press-fit inspection) of metallic objects.

#### Electrical features

Type of switching function	externer Verstärker
Type of electrical connection	Cable connector M12
Relative hysteresis	15 %
Switching distance	25 mm
Switching frequency	150 Hz

#### Mechanical features

Alignment of cable entry	axial
Design	Cylinder, screw-thread
Thread length	41 mm
Thread pitch	1.5 mm
Cable length	3 m
Cable infeed	axial
Length	63.5 mm
Mechanical mounting condition for sensor	non-flush
Degree of protection (IP)	IP50
Active area material of sensor	Plastic (Vectra®)
Housing material	Stainless steel 1.4305
Material of cable sheath	Plastic (PTFE)
Thread dimension	M50
Ambient temperature	0 - 230 °C

#### Other features

Reference medium / object	Standard measuring plate FE360 50x50x1mm
---------------------------	--

**Classification**

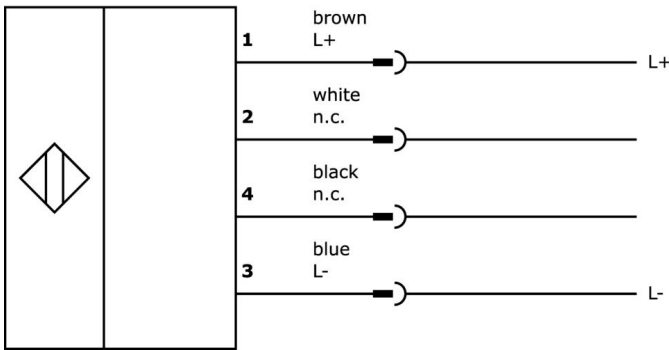
ETIM 8	EC002714 Inductive proximity switch
--------	-------------------------------------

**More**

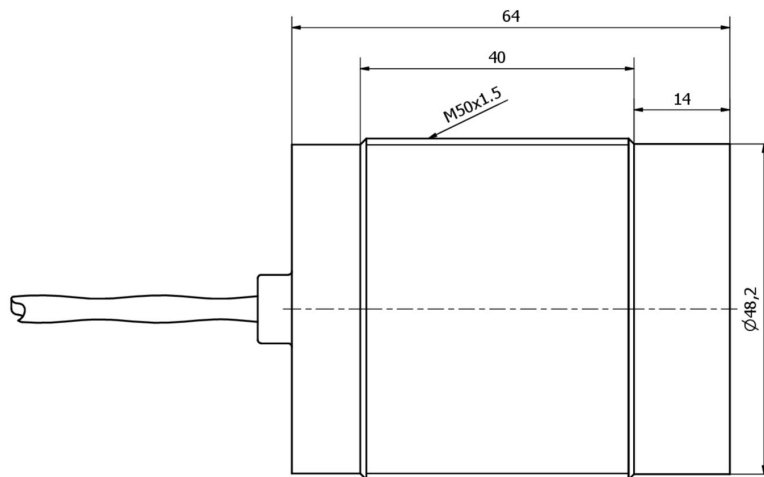
IPF Product Group	202 inductive sensors (high temperature)
packaging dimensions	210 x 138 x 95 mm
gross weight	494 g
Customs tariff number	85365019
WEEE number	40951076
Reach-compliant	Yes
RoHS-compliant	Yes

**Connection**

Connection to amplifier



**Dimensional drawing**



**Extract accessories program**

**IV120450**



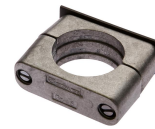
amplifier inductive, high-temperature, M12x1 55long, 10-35V DC, NO/NC, M12 plug-in connection 4pin 2m PUR (polyurethane), IP65, V2A, with LED display

**IV400720**



amplifier inductive, High-temperature, 42x86x40mm, 10-30V DC, PNP Normally open/ normally closed, Plug-in connection M12 4pin, IP65, Aluminum, With LED display

**AY000102**



accessories sensor, Ø50mm, aluminum, for sensor M50, for wall mounting, screw mounting

**AY000140**



accessories sensor, Ø50mm, Steel, For sensor M50, for Wall mounting, Screw mounting

**AY000141**



Plastic sheath, Ø17mm, Inner diameter 10mm, -40-250°C, Glass fiber with silicone rubber, Short-term resistance to weld spatter 1200°C, Tensile strength 400N, Flexible, Flame retardant, yard good

You can find further accessories on our homepage



**Installation**

Mounting / installation may only be carried out by a qualified electrician!



**Disposal**

WEEE number according to § 6 para. 3  
ElektroG: 40951076

**Safety warnings**

/ Before initial operation, please make sure to follow all safety instructions that may be provided in the product information.

/ Never use these devices in applications where the safety of a person depends on their functionality.