

KY98C054

Push button for integration • Capacitive

Sensor capacitive, push buttons, M18x1, 22.5mm, 19-29V DC, -30-70°C, relay contact NO, M8 plug connector 4-pin, IP67, plastic anodized/anodized, LED



Capacitive proximity switches are contact-free sensors. They detect metallic and non-metallic objects, regardless of whether they move or not. The achievable sensing range of the devices depends on the object material, its dimensions and the response sensitivity, which is set via a potentiometer. The vibration-resistant sensors can be approached laterally or frontally. Capacitive proximity switches are used for presence detection (e.g. sealing detection), positioning (e.g. PET bottles), counting (e.g. plastic caps), level detection (e.g. lubricant) or distance measurements (e.g. thickness measurement) of solid and liquid materials.

Electrical features

Display	LED display
Type of switching function	Normally open contact (NO)
Type of electrical connection	Connector M8
Type of switching output	Relay contact
Rated switching current	400 mA
Short-circuit protection	Yes
No-load current	30 mA
Number of pins	4
Voltage drop	2.5 V
Reverse polarity protection	Yes
Operating voltage (DC)	19,2 - 28,8 V

Mechanical features

Design	Round
Thread length	10 mm
Thread pitch	1 mm
Hole diameter	22.5 mm
Maximum tightening torque	1 Nm
Mounting method	Counter thread
Surface	teflon coated
Degree of protection (IP)	IP67
Front ring material	Metal
Housing material	Plastic
Thread dimension	M18
Ambient temperature	-30 - 70 °C

Other features

With front ring	Yes
-----------------	-----

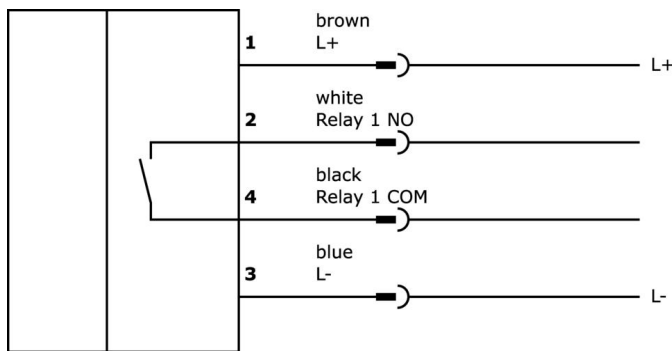
Classification

ETIM 8	EC001028 Pushbutton, complete unit
--------	------------------------------------

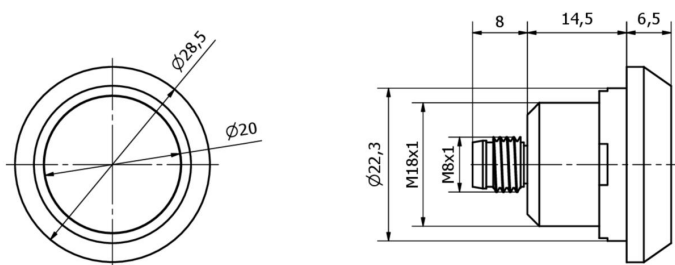
More

IPF Product Group	690 diverse sensors
packaging dimensions	105 x 43 x 43 mm
gross weight	30 g
Customs tariff number	85365019
WEEE number	40951076
Reach-compliant	Yes
RoHS-compliant	Yes

Connection



Dimensional drawing



Extract accessories program**VK000038**

Adaption, M8 Female (socket)
3pin Straight, M8 Male
(connector) 4pin Straight, 24V, -
25-85°C, IP67, Oil and cooling
lubricants, Welding area

VK000036

Adaption, M8 Female (socket)
3pin Straight, M12 Male
(connector) 3pin Straight, 24V, -
25-85°C, IP67, Oil and cooling
lubricants, Welding area

You can find further accessories on our homepage

**Installation**

Mounting / installation may only be carried out by a qualified electrician!

**Disposal**

WEEE number according to § 6 para. 3
ElektroG: 40951076

Safety warnings

- / Before initial operation, please make sure to follow all safety instructions that may be provided in the product information.
- / Never use these devices in applications where the safety of a person depends on their functionality.