

KY98E021

Push button for integration • Capacitive

Sensor capacitive, push buttons, 59mm, "Hand" symbol, 10-30V DC, -30-70°C, PNP NO, cable tail with 4-pin connector 0.2m, IP67, plastic anodized/anodized, LED



Capacitive proximity switches are contact-free sensors. They detect metallic and non-metallic objects, regardless of whether they move or not. The achievable sensing range of the devices depends on the object material, its dimensions and the response sensitivity, which is set via a potentiometer. The vibration-resistant sensors can be approached laterally or frontally. Capacitive proximity switches are used for presence detection (e.g. sealing detection), positioning (e.g. PET bottles), counting (e.g. plastic caps), level detection (e.g. lubricant) or distance measurements (e.g. thickness measurement) of solid and liquid materials.

Electrical features

Display	LED display
Type of switching function	Normally open contact (NO)
Type of electrical connection	Cable connector
Type of switching output	PNP
Rated switching current	400 mA
Short-circuit protection	Yes
No-load current	30 mA
Number of pins	4
Voltage drop	3 V
Reverse polarity protection	Yes
Operating voltage (DC)	10 - 30 V

Mechanical features

Design	Round
Cable length	0.2 m
Hole diameter	59 mm
Maximum tightening torque	1 Nm
Mounting method	Counter thread
Surface	teflon coated
Degree of protection (IP)	IP67
Housing material	Plastic
Ambient temperature	-30 - 70 °C

Other features

Printing	Symbol "hand"
With front ring	Yes

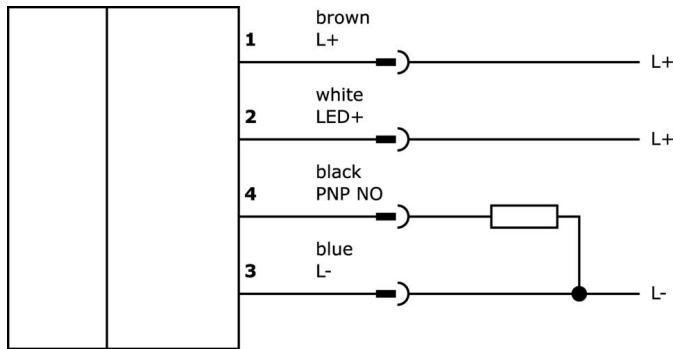
Classification

ETIM 8	EC001028 Pushbutton, complete unit
--------	------------------------------------

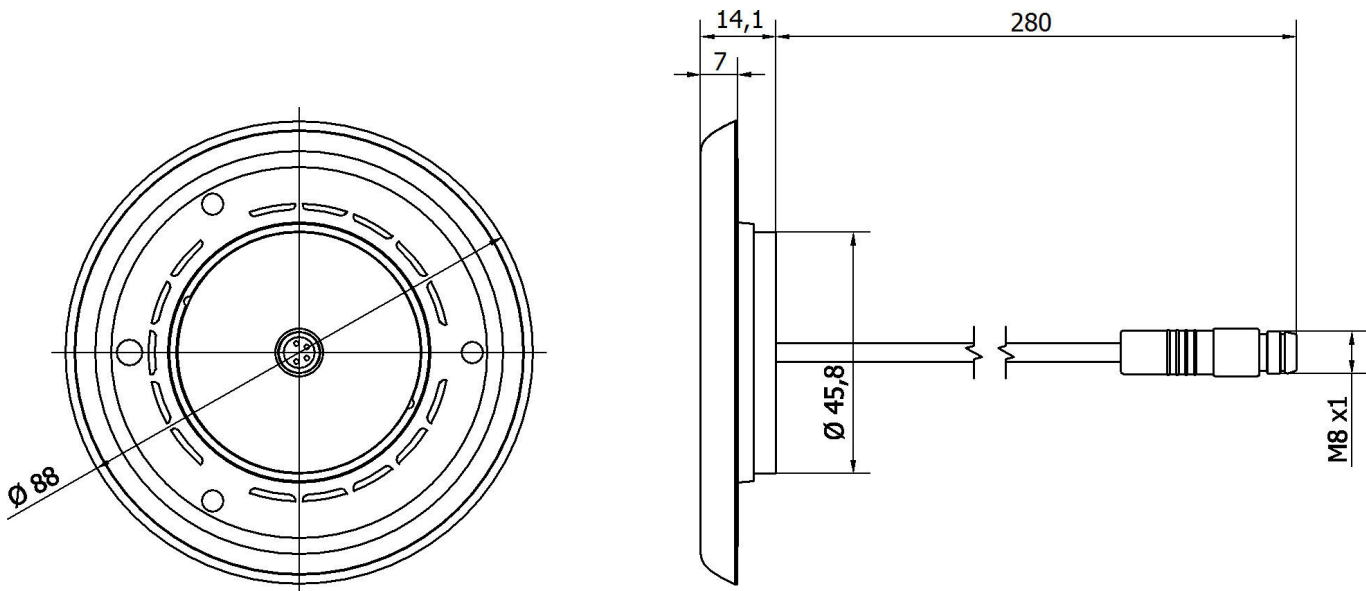
More

IPF Product Group	690 diverse sensors
packaging dimensions	143 x 74 x 74 mm
gross weight	100 g
Customs tariff number	85365019
WEEE number	40951076
Reach-compliant	Yes
RoHS-compliant	Yes

Connection



Dimensional drawing



Extract accessories program**AY000141**

Plastic sheath, Ø17mm, Inner diameter 10mm, -40-250°C, Glass fiber with silicone rubber, Short-term resistance to weld spatter 1200°C, Tensile strength 400N, Flexible, Flame retardant, yard good

You can find further accessories on our homepage

**Installation**

Mounting / installation may only be carried out by a qualified electrician!

**Disposal**

WEEE number according to § 6 para. 3
ElektroG: 40951076

Safety warnings

- / Before initial operation, please make sure to follow all safety instructions that may be provided in the product information.
- / Never use these devices in applications where the safety of a person depends on their functionality.