

LT030000

Fiber optic sensors • Fiber optic glass diffuse-refelction sensor

Diffuse reflection sensor, 0.3m, head: stainless steel 25long Ø1 Ø6, axial light exit, conductor: glass fiber optics+silicone, end piece: M18x1 brass, Sn: 5, -40-180°C, IP67



Photoconductors in conjunction with the appropriate fiber optics amplifier are contactless and wear-free position switches that can also be used in harsh environmental conditions. They detect objects regardless of their properties (e.g. shape, color, surface structure, material). As the photoconductive ends or heads have small dimensions and the fiber optics are also flexible, object detection in hard-to-reach places can be solved very elegantly. Fiber optics can be used without special precautions in potentially explosive areas and in zones with electrical and/or magnetic fields (high-voltage systems, electrical welding equipment), as their function is not impaired by this. Fiber optics are available in versions to implement the function as a through-beam light barrier or diffuse reflection sensor.

Electrical features

Bending section of the sensing head	0 mm
Bending angle of the sensing head	0 °
Short-circuit protection	No
Sensing head length	25 mm
Switching distance	0 - 5 mm
Reverse polarity protection	No

Mechanical features

Type of fiber	Multi
Design	Cylinder plain
Bending radius (flexible)	30 mm
Bending radius (fixed)	15 mm
Sensing head diameter 1	1
Sensing head diameter 2	6
Fiber diameter	0.7 mm
End piece diameter	20 mm
Fiber optic cable diameter, receiver end	4.2
Fiber optic cable diameter, transmitter end	4.2
Sensing head diameter	1 mm
Number of fibers	1
End piece thread pitch	1 mm
Length	300 mm
End piece length	28 mm
Degree of protection (IP)	IP67
Sheathing material	Silicone
End piece material	Brass
Fiber optics core material	Glass
Sensing head material	Stainless steel
Ejection control	Yes
Strong vibration / motion	Yes
Design of the fiber optic connection	screw fitting M18
Thread dimension of the end piece	M18
Ambient temperature	-40 - 180 °C

Optical features

Light exit	axial
Nominal operating distance	5 mm

Other features

Feeding technology	Yes
ardTE00_Anwendungen	Stanzwerkzeuge starke Verschmutzung

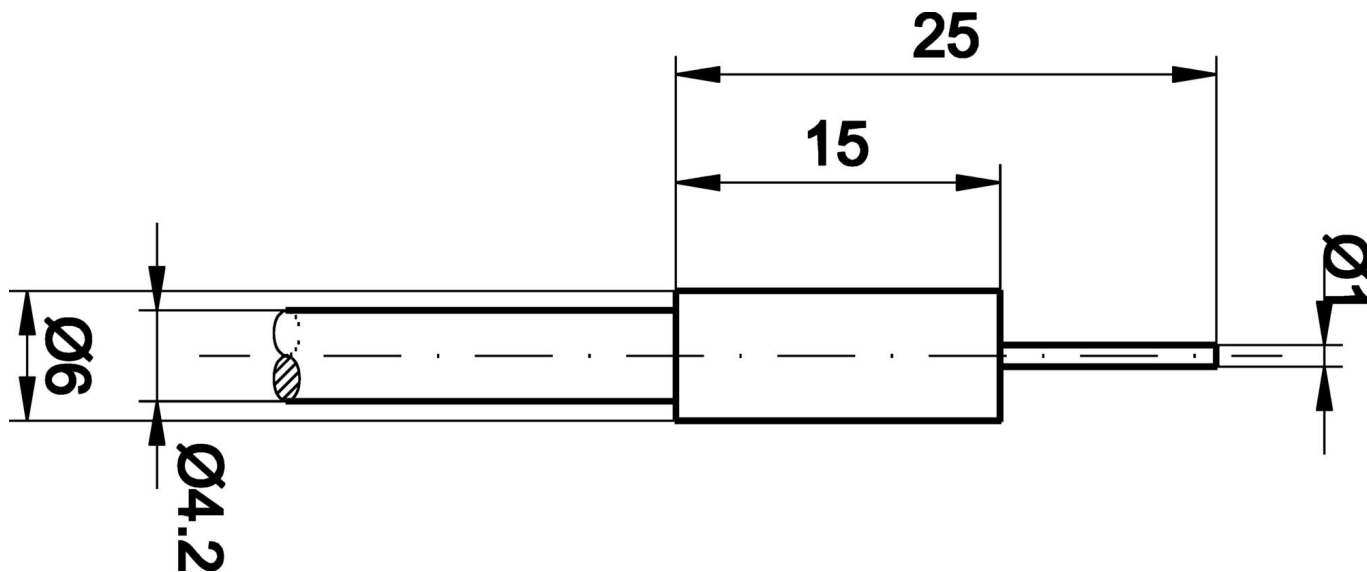
Classification

ETIM 8	EC002651 Fiber optic sensor/amplifier
--------	---------------------------------------

More

IPF Product Group	150 glass fibers
packaging dimensions	123 x 77 x 25 mm
gross weight	40 g
Customs tariff number	90011090
WEEE number	40951076
Reach-compliant	Yes
RoHS-compliant	Yes

Dimensional drawing



Extract accessories program

OL400321



fiber optic-amplifier,
42x84x40mm, 10-35V DC, 1x PNP/
NPN NC/NO, Connector M12 4pin,
IP65, Aluminum, Infrared light

OL400721



fiber optic-amplifier,
42x84x40mm, 10-35V DC, 2x PNP/
NPN NC/NO, Connector M12 4pin,
IP65, Aluminum, Infrared light,
Alarm output

You can find further accessories on our homepage



Installation

Mounting / installation may only be carried out by a qualified electrician!



Disposal

WEEE number according to § 6 para. 3
ElektroG: 40951076

Safety warnings

/ Before initial operation, please make sure to follow all safety instructions that may be provided in the product information.

/ Never use these devices in applications where the safety of a person depends on their functionality.