

MC120157

Magnetic field sensors • Proximity switches

sensor magnetic, all-steel, M12x1 69long, Sn: 40mm, 18-30V DC, -25-130°C, 1x PNP NO, Cable 3pin 10m Silicone, IP67, Stainless steel 1.4305, 2.8mT

including Nut



Magnetic proximity switches are contact-free sensors. They detect magnetic objects and - or magnets, regardless of whether they move or not. Since magnetic fields penetrate all non-magnetizable materials, the sensors can detect magnets through walls made of nonferrous heavy metal, stainless steel, aluminum, plastic, wood or through excessive sailing, for instance. The achievable sensing range of the devices depends on the strength of the affecting magnetic field. Magnetic sensors are used for positioning (e.g. position checks on hoisting gear), speed checks (e.g. on conveyor belts or transmission cog wheels through the aluminum housings) or for position detection (e.g. of goods carriers).

Electrical features

Number of switching outputs	1
Type of switching function	Normally open contact (NO)
Type of electrical connection	Cable
Type of switching output	PNP
Rated switching current	100 mA
Absolute hysteresis	6 mm
Short-circuit protection	Yes
No-load current	20 mA
Magnetic sensitivity	2.8 mT
Switching distance	40 mm
Switching frequency	1000 Hz
Voltage drop	2 V
Reverse polarity protection	Yes
Operating voltage (DC)	18 - 30 V

Mechanical features

Number of cores	3
Design	Cylinder, screw-thread
Diameter	12 mm
Thread length	55 mm
Thread pitch	1 mm
Cable length	10 m
Length	69 mm
Degree of protection (IP)	IP67
Active area material of sensor	Stainless steel 1.4305
Housing material	Stainless steel 1.4305
Material of cable sheath	Silicone
Thread dimension	M12
Ambient temperature	-25 - 130 °C

Other features

Harsh environmental conditions	Yes
Oil and cooling lubricants	Yes

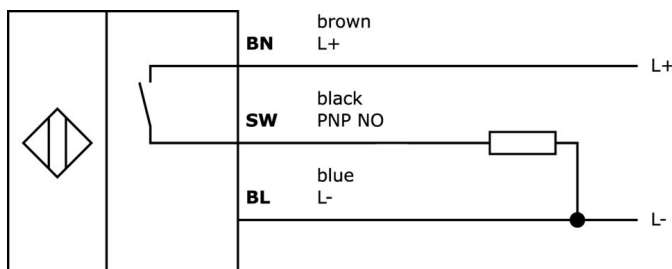
Classification

ETIM 8	EC002544 Magnetic proximity switch
--------	------------------------------------

More

IPF Product Group	232 magnetic sensors (high temperature)
packaging dimensions	149 x 124 x 28 mm
gross weight	270 g
Customs tariff number	85365019
WEEE number	40951076
Reach-compliant	Yes
RoHS-compliant	Yes

Connection



Extract accessories program

AM000001



Accessories, magnetic, Ø20mm 6.5long, strontium ferrite, internal hole Ø4.3mm, 25-130°C

AM000002



Accessories, magnetic, Ø32mm 15long, strontium ferrite, internal hole Ø5.6mm, 25-130°C

AY000162



Accessories, magnetic, Ø43mm, neodymium-iron-boron, inside thread M5, rubber

AY000159



accessories sensor, Mounting pipe, Ø12mm 200long, Aluminum Anodised

AY000141



Plastic sheath, Ø17mm, Inner diameter 10mm, -40-250°C, Glass fiber with silicone rubber, Short-term resistance to weld spatter 1200°C, Tensile strength 400N, Flexible, Flame retardant, yard good

VY000004



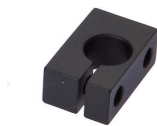
DC power supply, sensor tester, 120x26x72mm, 18V, 0.04A, Spring clamp connection 4pin, IP20, Plastic

AY000025



accessories, Hexagon nut, M12x1, Wrench size 17mm, Brass Nickel-plated

AY000032



accessories sensor, Ø12mm, Aluminum, For sensor 12mm, for Wall mounting, Screw mounting

NG530002



DC power supply, single-phase, 99x114x22mm, 24V, 0.1A, Number of relay outputs 2, 100-264V AC 50Hz, 100-264V AC 60Hz, Screw connection, IP20, Plastic, Stabilized, Output voltage, pulsed

You can find further accessories on our homepage



Installation

Mounting / installation may only be carried out by a qualified electrician!



Disposal

WEEE number according to § 6 para. 3 ElektroG: 40951076

Safety warnings

/ Before initial operation, please make sure to follow all safety instructions that may be provided in the product information.

/ Never use these devices in applications where the safety of a person depends on their functionality.