

## MZA70156

### Magnetic field sensors • Sensors for T-slot

Sensor Magnetic, cylinder, 6.2mm T-slot, 4.3x19x6.2mm, 10-30V DC, -25-130°C, 1x PNP NO, M8 cable connector 3-pin 0.6m PTFE, IP67, zinc diecast, 2.8mT, installation from above, position of sensor surface center of device



For many tasks in automation technology, it is necessary to recognize the movement processes in pneumatic and hydraulic cylinders and to precisely detect the position of the piston. This is where magnetic cylinder sensors are used, which are attached to the cylinders using adapters or directly from the outside.

#### Electrical features

Number of switching outputs	1
Type of switching function	Normally open contact (NO)
Type of electrical connection	Cable connector M8
Type of switching output	PNP
Rated switching current	150 mA
Absolute hysteresis	1 mm
Short-circuit protection	Yes
No-load current	15 mA
Magnetic sensitivity	2.8 mT
Number of pins	3
Switching frequency	1000 Hz
Sensor surface (active)	Middle area
Voltage drop	2 V
Reverse polarity protection	Yes
Absolute repeat accuracy	0.1 mm
Operating voltage (DC)	10 - 30 V
ardSOCA_ElektrischerAnschluss	Cable connector M8 3-pin 0.6m

**Mechanical features**

Number of cores	3
Design	Cuboid
Width	6.15 mm
Height	4.3 mm
Cable length	0.6 m
Sensor surface position	Center of the device
Length	19 mm
Mounting access, cylinder groove	From the top
Degree of protection (IP)	IP67
Housing material	Zinc die-cast
Material of cable sheath	Plastic (PTFE)
Strong vibration / motion	Yes
Ambient temperature	-25 - 130 °C
Ambient temperature of the connector	-25 - 70 °C
ardSOCA_Abmessungen	19x6.15x4.3mm

**Other features**

Suitable for	6.2mm T-slot
Cylinder version	With T-groove
Harsh environmental conditions	Yes
Oil and cooling lubricants	Yes

**Classification**

ETIM 8	EC002544 Magnetic proximity switch
--------	------------------------------------

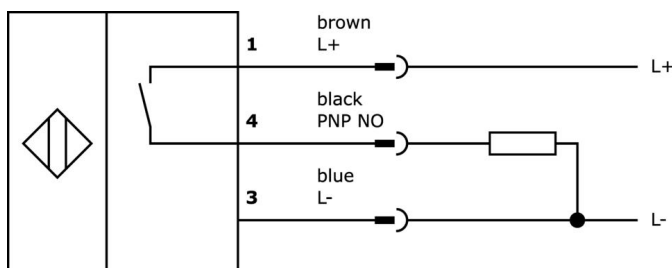
**More**

IPF Product Group	222 pneumatic cylinder sensors (high temperature)
packaging dimensions	120 x 100 x 17 mm
gross weight	16 g
Customs tariff number	85365019
WEEE number	40951076
Reach-compliant	Yes
RoHS-compliant	Yes

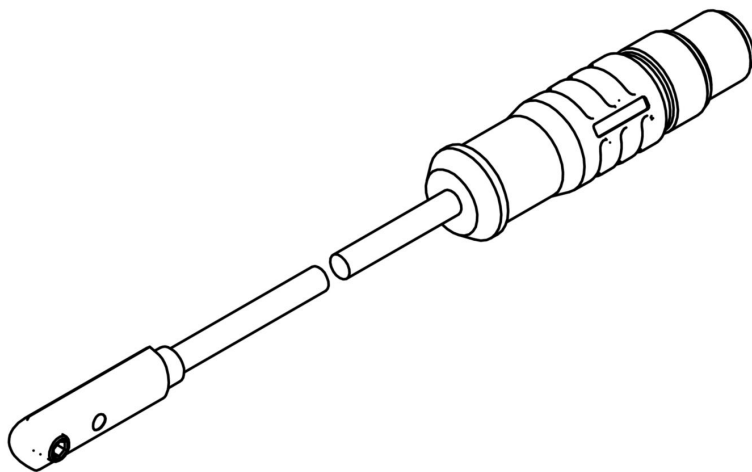
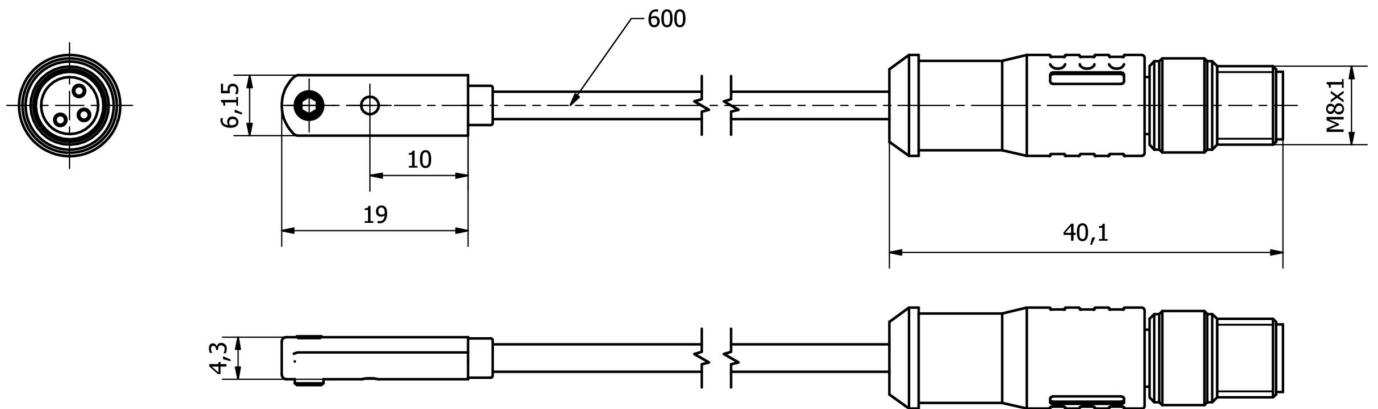
**Important notes**

**/** The output electronics are located in the connector. Do not disconnect the connector!

**Connection**



**Dimensional drawing**



**Extract accessories program**

**AY000141**



Plastic sheath, Ø17mm, Inner diameter 10mm, -40-250°C, Glass fiber with silicone rubber, Short-term resistance to weld spatter 1200°C, Tensile strength 400N, Flexible, Flame retardant, yard good

**AM98E153**



accessories magnetic, Installation tape, 259x9,5mm, Span 35-68mm, For sensor MZ07, Stainless steel

**AM98A882**



accessories magnetic, For sensor MZ07, for Cylinder, Bosch profiled barrel, Screw mounting

**AM000076**



accessories magnetic, clamp, 4x6, 2x6,2mm, aluminum

**NG530002**



DC power supply, single-phase, 99x114x22mm, 24V, 0.1A, Number of relay outputs 2, 100-264V AC 50Hz, 100-264V AC 60Hz, Screw connection, IP20, Plastic, Stabilized, Output voltage, pulsed

**VY000004**



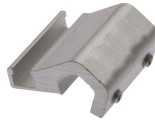
DC power supply, sensor tester, 120x26x72mm, 18V, 0.04A, Spring clamp connection 4pin, IP20, Plastic

**AM000070**



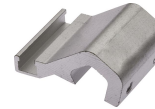
accessories magnetic, Mounting clip, 12x30x25mm, span 3.9-6.6mm, Metal, For sensor MZ07, for Cylinder pull-rod, Screw mounting

**AM000071**



accessories magnetic, Mounting clip, 16x30x30mm, span 6.1-8.5mm, Aluminum, For sensor MZ07, for Cylinder pull-rod, Screw mounting

**AM000072**



accessories magnetic, Mounting clip, 18x30x38mm, span 8.95-10.7mm, Aluminum, For sensor MZ07, for Cylinder pull-rod, Screw mounting

You can find further accessories on our homepage



**Installation**

Mounting / installation may only be carried out by a qualified electrician!



**Disposal**

WEEE number according to § 6 para. 3 ElektroG: 40951076

**Safety warnings**

/ Before initial operation, please make sure to follow all safety instructions that may be provided in the product information.

/ Never use these devices in applications where the safety of a person depends on their functionality.