

## MZR901A2

### Magnetic field sensors • Sensors for pneumatic cylinders

sensor magnetic, cylinder, 9mm round, Ø9mm 22long, 10-30V DC, 1x PNP NO, Cable 10m PUR (Polyurethane), IP67, Stainless steel 1.4305, LED, 2.8mT, mounting From the top, Sensor surface position Center of the device



For many tasks in the field of automation technology, it is necessary to recognize the motional processes in pneumatic and hydraulic cylinders and to detect the position of the piston with precision. For this, magnetic cylinder sensors are used.

#### Electrical features

Number of switching outputs	1
Display	LED display
Type of switching function	Normally open contact (NO)
Type of electrical connection	Cable
Type of switching output	PNP
Rated switching current	150 mA
Short-circuit protection	Yes
No-load current	15 mA
Magnetic sensitivity	2.8 mT
Switching frequency	1000 Hz
Sensor surface (active)	Middle area
Voltage drop	2 V
Reverse polarity protection	Yes
Absolute repeat accuracy	0.1 mm
Operating voltage (DC)	10 - 30 V

#### Mechanical features

Number of cores	3
Design	Cylinder plain
Diameter	9 mm
Cable length	10 m
Sensor surface position	Center of the device
Length	22 mm
Degree of protection (IP)	IP67
Housing material	Stainless steel 1.4305
Material of cable sheath	Plastic (PUR)
Strong vibration / motion	Yes
Ambient temperature	-25 - 75 °C
Line diameter	3 mm

**Other features**

Harsh environmental conditions	Yes
Oil and cooling lubricants	Yes
Version	For 9mm round

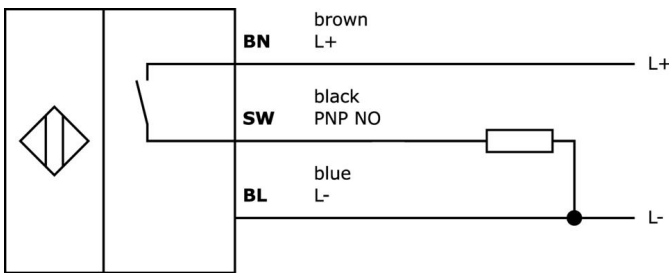
**Classification**

ETIM 8	EC002544 Magnetic proximity switch
--------	------------------------------------

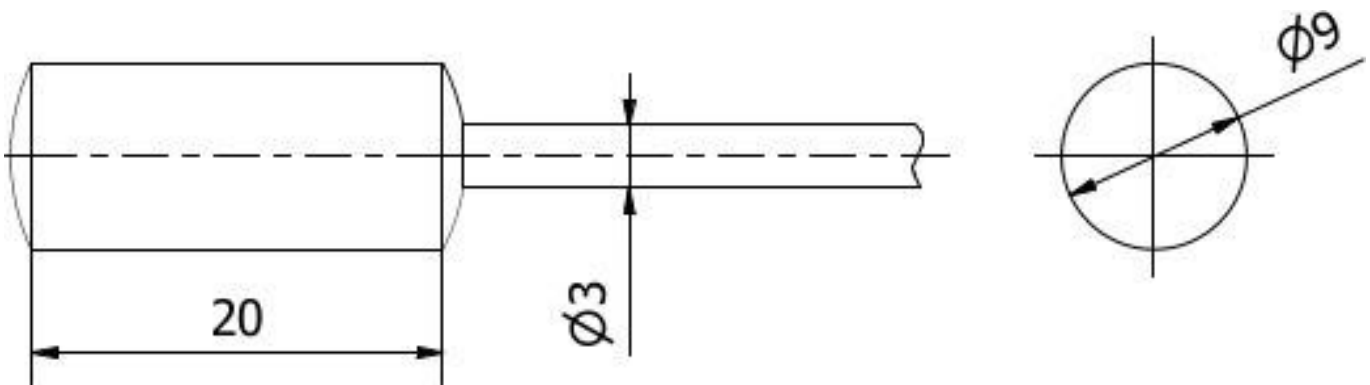
**More**

IPF Product Group	220 pneumatic cylinder sensors
packaging dimensions	149 x 124 x 35 mm
gross weight	143 g
Customs tariff number	85365019
WEEE number	40951076
Reach-compliant	Yes
RoHS-compliant	Yes

**Connection**



**Dimensional drawing**



**Extract accessories program**

**VK003076**



Cable connector, Angular, Suitable for self-assembly, Soldering connection, 4A, 60V, -40-85°C, M8 Male (connector) 3pin, IP67, Brass

**VK003078**



Cable connector, Straight, Suitable for self-assembly, Soldering connection, Ø3.5-5mm, 4A, 60V, -40-85°C, M8 Male (connector) 3pin, IP67, Brass

**AM000011**



accessories magnetic, Mounting clip, 24x21x10mm, span 9.2-9.94mm, Polyoxymethylene (POM), For sensor 9round, for Cylinder, 8round, Screw mounting

**AM000012**



accessories magnetic, Mounting clip, 26x21x10mm, span 11-11.9mm, Polyoxymethylene (POM), For sensor 9round, for Cylinder, 10round, Screw mounting

**VY850001**



Inverter/signal-inversion/turn-off delay, 85x65x18mm, 0.01-10s, 12-30V DC, 1x NC/NO, Clamp 8pin, IP40, Plastic, Plug-in jumpers

**VY850002**



Inverter/signal-inversion/turn-off delay, 85x65x18mm, 0.01-10s, 12-30V DC, 1x NC/NO, Clamp 8pin, IP40, Plastic, Plug-in jumpers

**NG530002**



DC power supply, single-phase, 99x114x22mm, 24V, 0.1A, Number of relay outputs 2, 100-264V AC 50Hz, 100-264V AC 60Hz, Screw connection, IP20, Plastic, Stabilized, Output voltage, pulsed

**VY000004**



DC power supply, sensor tester, 120x26x72mm, 18V, 0.04A, Spring clamp connection 4pin, IP20, Plastic

**AY000154**



Tool, Screwdriver set, Internal hexagon 0.7mm, Internal hexagon 0.9mm, Internal hexagon 1.3mm, Internal hexagon 1.5mm, Internal hexagon 2mm, Slot 1.5mm, Slot 2mm, Slot 2.5mm, Chromium steel

You can find further accessories on our homepage



**Installation**

Mounting / installation may only be carried out by a qualified electrician!



**Disposal**

WEEE number according to § 6 para. 3 ElektroG: 40951076

**Safety warnings**

- / Before initial operation, please make sure to follow all safety instructions that may be provided in the product information.
- / Never use these devices in applications where the safety of a person depends on their functionality.