

## VKA08P25

### Connection technology • Data transfer

Data cable, connection cable, 10m, M12 connector 8-pin straight, A-coding, RJ45 connector 8-pin straight, 8x0.14mm<sup>2</sup>, category 5E, -40-80°C, TPU, shielded



This shielded cable can be used to transmit complex information digitally into a network for further processing. The connections are pre-wired. The line is equipped with an 8-pin A-coded M12-connector on the device side and an RJ45 connector on the network side.

#### Electrical features

Type of plug-in contact, A connection	Male (connector)
Type of plug-in contact, B connection	Male (connector)
Type of A electrical connection	M12
Type of B electrical connection	RJ45
Number of pins of A connection	8
Number of pins of B connection	8
Supported communication interface	1x 100MbE   1x RS485   EtherCAT   Ethernet   Ethernet Industrial Protocol
Operating voltage (AC 50Hz)	30 V
Operating voltage (DC)	30 V
Shielded	Yes
ardSOCA_ElektrischerAnschluss	8-core 10m
ardTEEL_Uebertragungsklassifizierung	Cat7
ardSOCA_Betriebsspannung	30VAC(50Hz)   30VDC
Coding of connection A	A

**Mechanical features**

Number of cores	8
Wire assembly	7 x 0.16mm
Conductor cross-section	0.14 mm <sup>2</sup>
Outer diameter	6.4 mm
Cable sheath color	green
Cable length	10 m
Cable infeed of A connection	straight
Cable infeed of B connection	straight
Housing material	TPU
Material of cable sheath	Kunststoff (PUR)
Perm. ambient temperature of cable, fixed cable	-40 - 80 °C
Ambient temperature	-30 - 70 °C
ardTEME_WerkstoffDerKontakteAnschlussA	CuZn, gold-plated
ardTEME_WerkstoffDerKontakteAnsWerkstoff_der_Kontakte_AnschCuZn, gold-plated	
ardTEME_Werkstoffeigenschaften	Halogenfrei

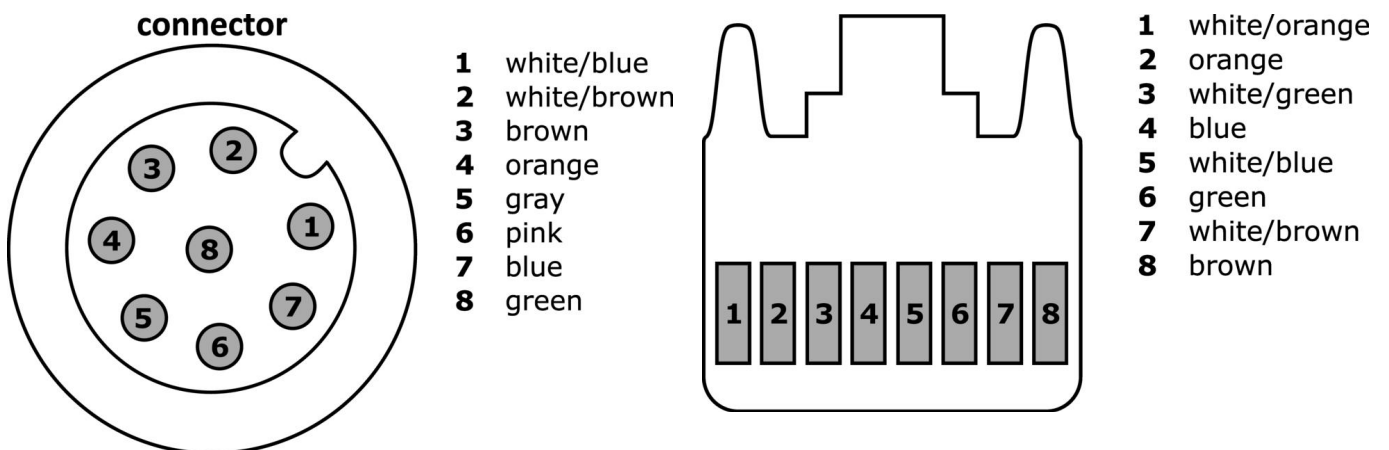
**Classification**

ETIM 8
--------

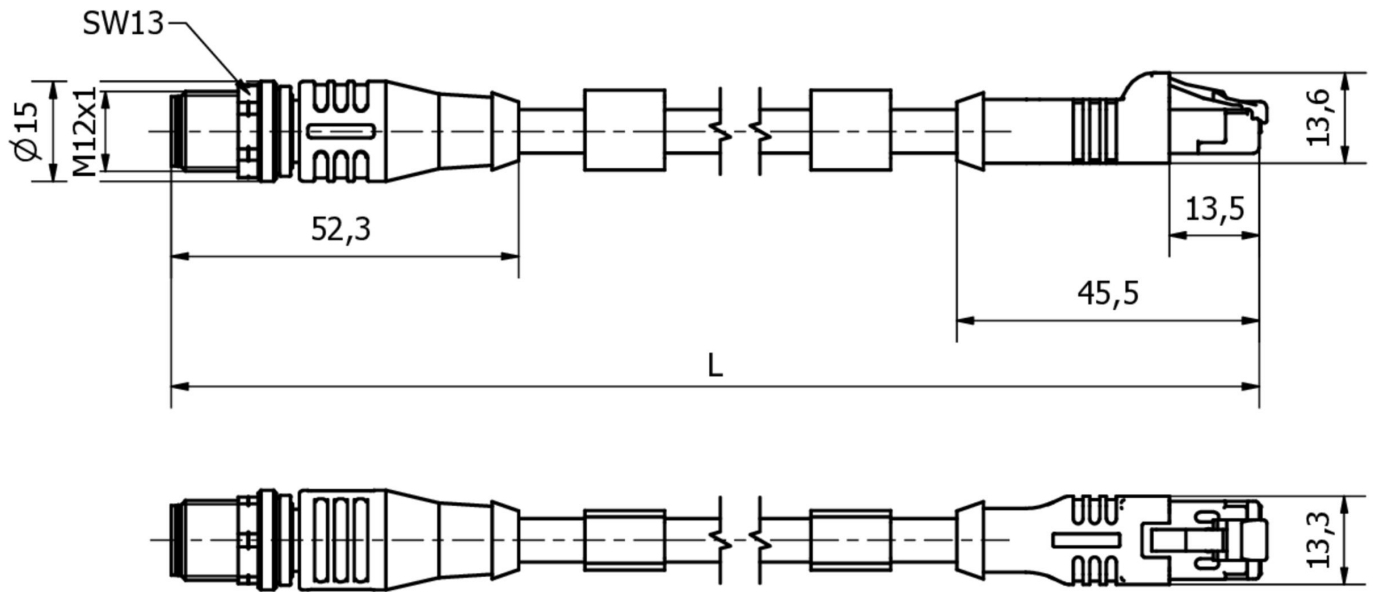
**More**

IPF Product Group	851 cable sockets / connectors (both side ready made)
packaging dimensions	350 x 250 x 40 mm
gross weight	488 g
Customs tariff number	85444290
WEEE number	40951076
OzDS-compliant	Yes
POP-compliant	Yes
Reach-compliant	Yes
RoHS-compliant	Yes

**Connection**



**Dimensional drawing**



**Extract accessories program**

**AV98F001**



**AV98F002**



Tool, wrench insert for torque wrench, SW13

**AV000140**



You can find further accessories on our homepage



**Installation**

Mounting / installation may only be carried out by a qualified electrician!



**Disposal**

WEEE number according to § 6 para. 3  
ElektroG: 40951076

**Safety warnings**

/ Before initial operation, please make sure to follow all safety instructions that may be provided in the product information.

/ Never use these devices in applications where the safety of a person depends on their functionality.