

## VKBE7B45

### Connection technology • Cable sockets / connectors pre-assembled on one side

Connection cable, 25m, M9 Male (connector) 8pin Straight, Free conductor end, 8wire, PUR (Polyurethane)



ipf cable sockets are used primarily for establishing the electrical connection of sensors. Their features are characterized by rugged design, the highest protection classes (IP67 | IP68 | IP69K) and, if desired, with 360° shielding. With the features: bus-ready, suitable for use with drag chains and robots, resistance to oil and chemicals, resistance to welding sparks, their resistance to cleaning agents or high-pressure and steam-jet cleaning, the expanded temperature range of up to +230°C, the rapid interconnection technology and special data transmission properties, the cable sockets meet all requirements in automation technology.

#### Electrical features

|                                       |                    |
|---------------------------------------|--------------------|
| Type of plug-in contact, A connection | Male (connector)   |
| Type of A electrical connection       | M9                 |
| Type of B electrical connection       | Free conductor end |
| Number of pins of A connection        | 8                  |

#### Mechanical features

|                              |               |
|------------------------------|---------------|
| Number of cores              | 8             |
| Cable length                 | 25 m          |
| Cable infeed of A connection | straight      |
| Material of cable sheath     | Plastic (PUR) |

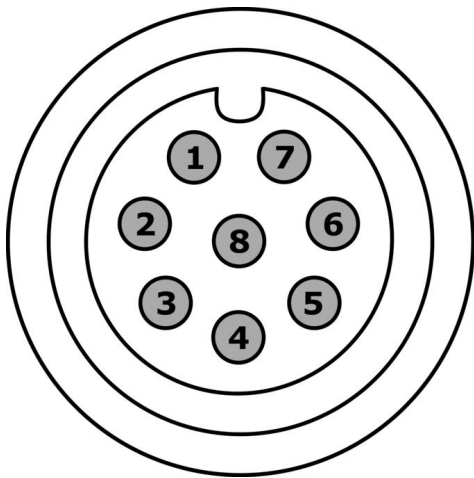
#### Classification

|        |  |
|--------|--|
| ETIM 8 | EC001855 Assembled sensor-actuator cable |
|--------|--|

#### More

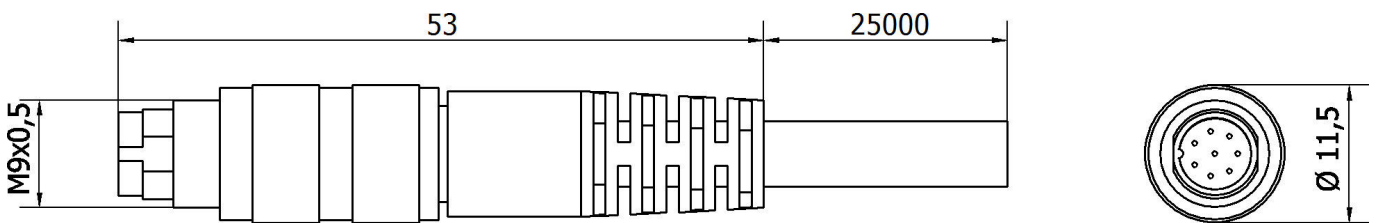
|                       |  |
|-----------------------|--|
| IPF Product Group     | 856 cable socket / cable connector (diverse) |
| packaging dimensions  | 360 x 250 x 60 mm                            |
| gross weight          | 988 g  |
| Customs tariff number | 85444290                                     |
| WEEE number           | 40951076                                     |
| POP-compliant         | Yes  |
| Reach-compliant       | Yes  |
| RoHS-compliant        | Yes  |

**Connection**



- 1** white
- 2** brown
- 3** green
- 4** yellow
- 5** gray
- 6** pink
- 7** blue
- 8** red

**Dimensional drawing**



**Extract accessories program**

**AY000141**



Plastic sheath, Ø17mm, Inner diameter 10mm, -40-250°C, Glass fiber with silicone rubber, Short-term resistance to weld spatter 1200°C, Tensile strength 400N, Flexible, Flame retardant, yard good

**AV98F001**



**AV98F002**



Tool, wrench insert for torque wrench, SW13

**AV000140**



You can find further accessories on our homepage



**Installation**

Mounting / installation may only be carried out by a qualified electrician!



**Disposal**

WEEE number according to § 6 para. 3 ElektroG: 40951076

---

**Safety warnings**

- / Before initial operation, please make sure to follow all safety instructions that may be provided in the product information.
- / Never use these devices in applications where the safety of a person depends on their functionality.