

ENCODER PARAMETERIZABLE



High-End in High-Tech.



←
**SCAN QR CODE
AND READ FLYER DIGITALLY**

THE TRUE SPECIALISTS

Whether rotation speed, rotation angle, direction of rotation, speed, length or distance: incremental encoders from ipf electronic are the true specialists when it comes to high-precision movements, positioning, control (unit) and measured values in industry.

One for all, instead of costly diversity

Conventional encoders must be preset at the factory to the number of pulses per revolution required for an application. This means: A separate encoder for each application and each resolution!

Not with us! The **VD58982x** series of incremental encoders from ipf electronic can be flexibly parameterized at any time. The required number of pulses per revolution can therefore be easily defined directly on site. This means: flexibility at the highest level!

The advantages:

- / Encoder optionally with solid or hollow shaft for many different applications
- / Fewer variants and less cost-driving stock levels
- / High resolution, variably parameterizable
- / Wide range of options for individual customization
- / Smart replacement thanks to parameters that can be transferred from device to device
- / Extremely robust (high shock and vibration resistance)
- / Ideal for high rotation speeds and fast-running processes
- / Free, intuitive parameterization software for individual settings

Convinced?

Then you are sure to find not only the right encoder, but also the perfect accessories for your application on the following pages.

FUNCTIONALITY

Encoders detect rotational movements and convert them into evaluable digital output signals for processing in a control unit (PLC).

Encoders from ipf electronic work according to the principle of optical scanning and have an impulse disc on which a repeating (incremental) line graduation is located. This is scanned by an optical system and converted into encoder-specific output signals by an integrated electronic system.

The incremental encoders in the **VD58982x** series can be set to the required number of pulses per revolution (between 1 and 65,536 pulses) directly on site via free PC software. This ensures a high degree of variability in the resolution of the encoder at all times.

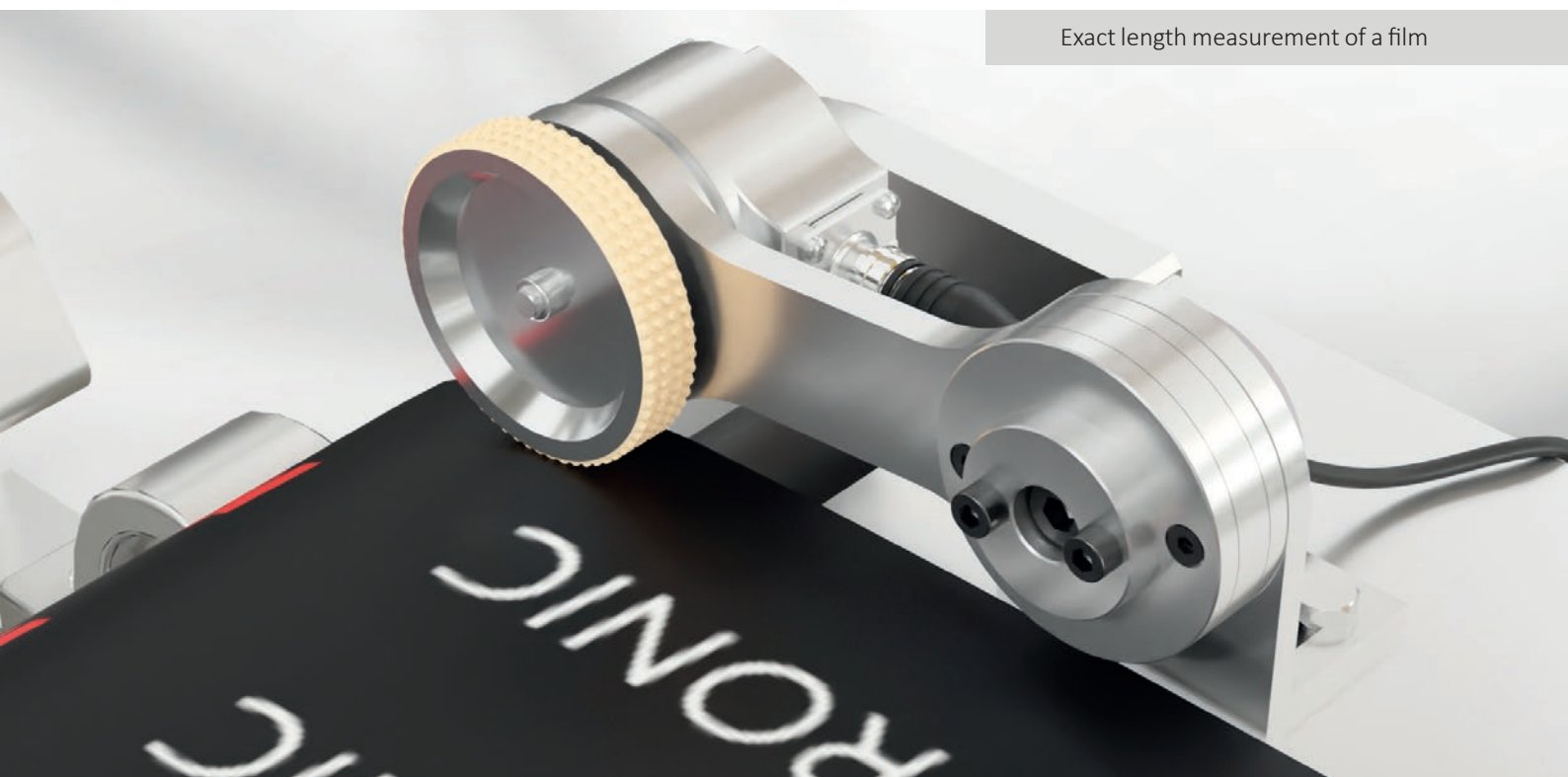
And to ensure that a suitable solution is always available despite a wide variety of tasks, the parameterizable encoders are supplemented by a selection of tried and tested accessories.

Application examples:

- / Variable speed measurements in a variety of applications
- / High-precision monitoring and control (unit) of travel paths in automation and logistics
- / Precise positioning of tools on machines and systems
- / Precise length measurement on conveyor systems
- / High-precision angular measurement on bending machines
- / Monitoring of die presses during bending processes
- / Position recognition and control (unit) in automated processes
- / Speed measurement, e.g. on winding systems

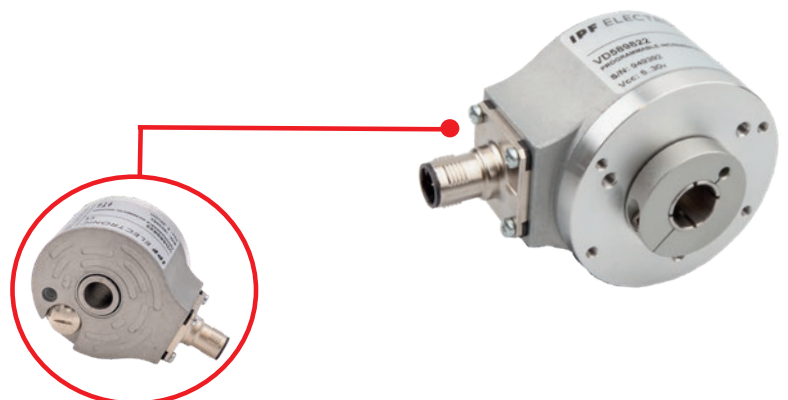
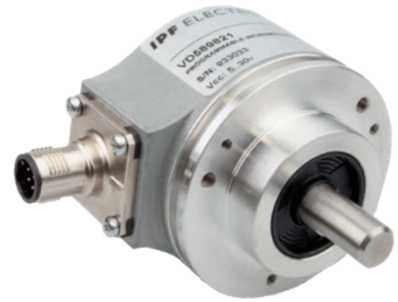
...and your application?

Exact length measurement of a film



ENCODER WITH SOLID SHAFT

l 6mm and 10mm



IPF ELECTRONIC

ROTARY ENCODER WITH THROUGH-HOLLOW-SHAFT

l 8mm, 10mm and 12mm

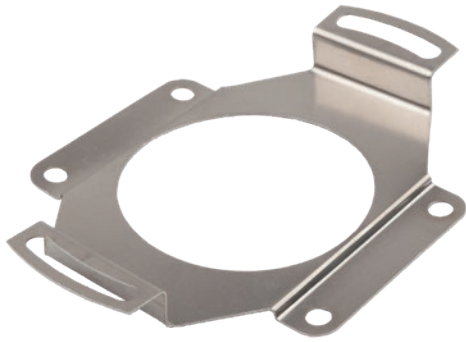
ACCESSORIES

TORQUE ARM

/ Reliable mounting of encoders with hollow shaft

/ Securing the encoder against twisting in a wide range of applications

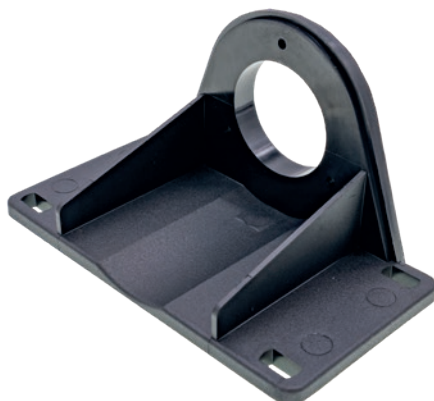
/ Accessories for **VD589822**, **VD589823** and **VD589824**



MOUNTING BRACKET

/ Reliable mounting of encoders with solid shaft

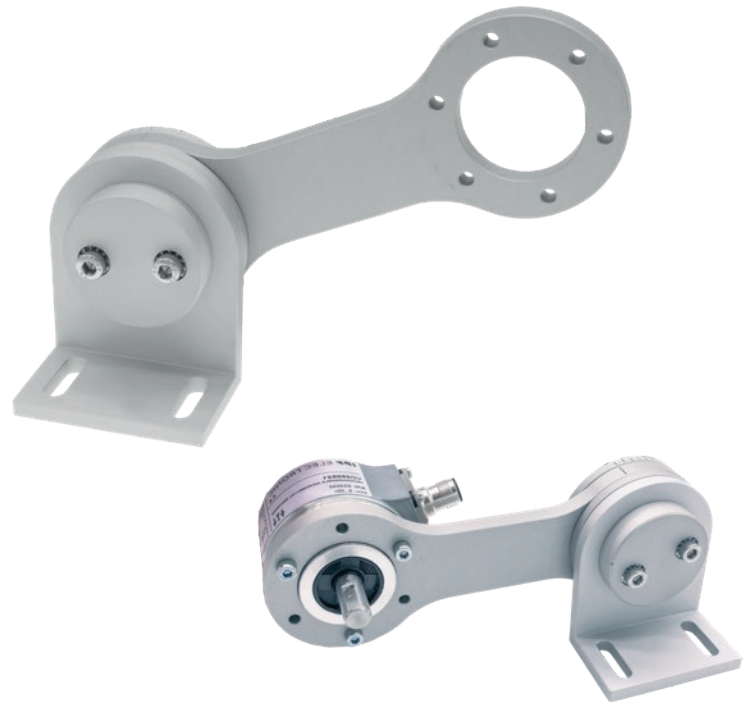
/ Stainless steel or plastic mounting brackets



ACCESSORIES

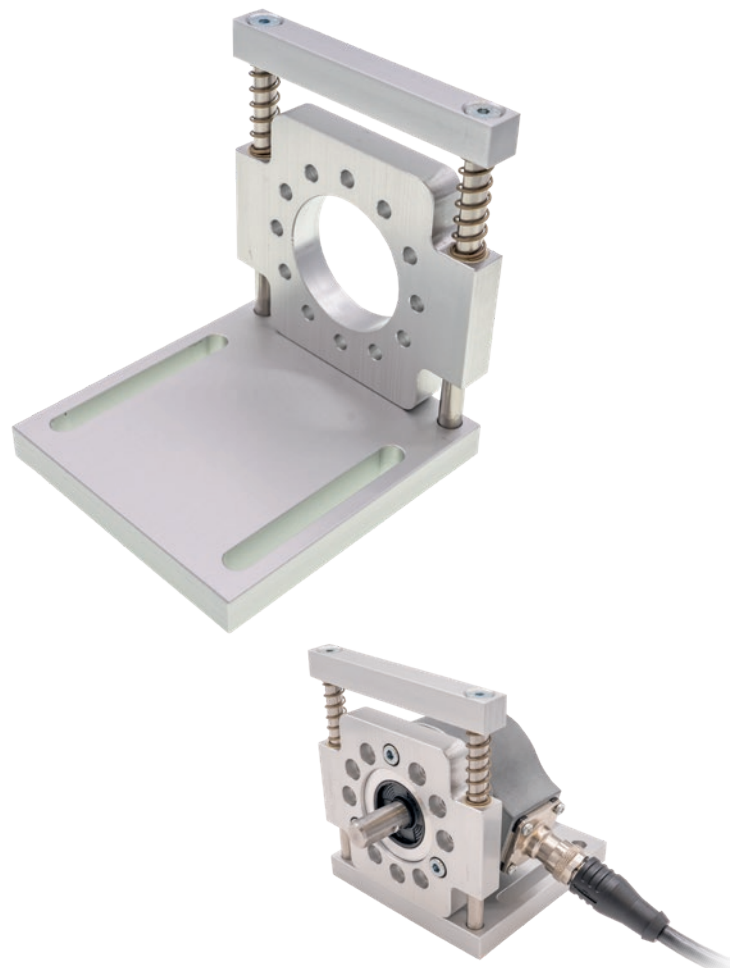
SPRING ARM

- / Simple, movable mounting of encoders with solid shaft and measuring wheel
- / Optimum pressure of the measuring wheel on different materials
- / Spring arm with sufficient freedom of movement for variable material heights
- / Flexible compensation, e.g. for height fluctuations in flexible belt materials
- / Avoidance of slippage on smooth materials with a suitable measuring wheel
- / Accessories for **VD589820** and **VD589821**



SPRING-LOADED MOUNTING BRACKET

- / Reliable mounting of encoders with solid shaft
- / Spring-mounted bracket for use with measuring wheels
- / Optimum contact pressure of the measuring wheel on various materials
- / Avoidance of slippage on smooth materials with a suitable measuring wheel
- / Accessories for **VD589820** and **VD589821**



PERFECT GRIP ON EVERY SURFACE

MEASURING WHEELS

/ Measuring wheels for encoders with solid shaft (VD589820, VD589821)

/ Circumference optionally 200mm or 500mm

/ Simple adjustment or setting of the suitable resolution

/ Treads made of plastic or rubber

/ Different tread profiles (e.g. knobs, grooves) for optimum adaptation to different material surfaces (better grip)

/ Different widths (12mm and 25mm)

/ Prevention of slippage on different surfaces



MATERIAL SURFACE	RECOMMENDED MEASURING WHEEL SURFACE
Plastic, cardboard, wood, textiles	Hytrel / ribbed
Plastic, painted surfaces, paper, cardboard, wood, metal, textiles	Hytrel / smooth
Plastic, metal, textiles	Nitrile / nub rubber

PERFECT TRANSMISSION FROM SHAFT TO SHAFT

IPF ELECTRONIC

WENDELKUPPLUNGEN

- / For encoders with 6mm and 10mm solid shaft
- / Reliable connection between encoder shaft and shaft to be controlled
- / Flexible compensation of slight shaft misalignment during installation
- / Simple pulse damping between the shaft to be controlled and the encoder shaft
- / Easy connection of shafts (shaft A to shaft B) with different diameters
- / Effective reduction of unwanted vibrations



PERFECT CONNECTION IN EVERY SITUATION



CONNECTION CABLE

- / Connection cable (adapter cable) for replacing ipf encoders with a fixed pulse counter with parameterizable encoders
- / Accessories for encoders with solid shaft and hollow shaft



CONNECTION CABLE

- / Shielded connection cables for parameterizable encoders with free cable end and M12 socket.
- / Accessories for encoders with solid shaft and hollow shaft



PROGRAMMING CABLE

- / PC/encoder connection cable for encoder parameterization
- / USB 2.0 Micro-B to USB-A, length: 1m
- / Accessories for encoders with solid shaft and hollow shaft



SOFTWARE FOR ENCODERS

PERFECT PARAMETERIZATION FOR ALL APPLICATIONS

The free, intuitive software provides the encoders with all the individual parameters required for the respective application. Simply connect the encoder to the PC and make the necessary settings with just a few clicks.
All parameters can be saved and are therefore available for transfer to another encoder at any time (e.g. when replacing a device).

One encoder - many options: More flexibility is not possible!

The encoders can be set individually and directly on site to the required number of pulses (between 1 and 65,536 pulses) per revolution.

Additional parameters can also be set:

- / Signal level: TTL (5V) or HTL (10 to 30 VDC)
- / Direction of rotation or direction in which the positive count is to take place: clockwise (CW) or counter-clockwise (CCW)
- / Position of a reference signal (zero pulse)
- / Width of the reference signal (Z 90° / Z 180°)
- / Activate output of inverted output signals (A-nA / B-nB / Z-nZ)

Monitoring: Simple, clear control of all settings

Technical Service

IPF Electronic GmbH
Rosmarter Allee 14
58762 Altena
Deutschland
☎ +49 2351 9365-0
🌐 www.ipf.de
📄 Version: 1.7

EFFICIENT ADVICE ON ALL QUESTIONS

PERSONAL SERVICE AND ON-SITE PROBLEM SOLVING

Every call is important! During our technical consultation, you will speak to experienced employees who will answer your questions competently and conscientiously. We want to provide you with comprehensive and individual advice at all times. Our experienced and specially trained team is on hand to help you. You can also contact your personal application specialist in Sales. We coordinate closely internally so that we can respond specifically to your request- quickly, competently and reliably.

Problems are becoming increasingly complex and diverse in almost all industrial application areas. External expertise is often required to find the right solutions. And you will find this together with a high level of technical and problem-solving expertise at ipf electronic. We will come to you on request. No distance is too far for us to talk to you personally, even if it is a seemingly simple task. Our via 20 application specialists are also close to you. So don't hesitate to give us a call.

Problems are becoming increasingly complex and diverse in almost all industrial application areas. External expertise is often required to find the right solutions. And you will find this together with a high level of technical and problem-solving expertise at ipf electronic. We will come to you on request. No distance is too far for us to talk to you personally, even if it is a seemingly simple task. Our via 20 application specialists are also close to you. So don't hesitate to give us a call.

Diversity, expertise, advice, flexibility:
This is ipf electronics recipe for success.

ipf electronic gmbh
Rosmarter Allee 14 • 58762 Altena
Germany
www.ipf-electronic.com

Headquarters
Tel +49 2351 9365-0
info@ipf-electronic.com



Discover more flyers!

Subject to alteration! Version: August 2025