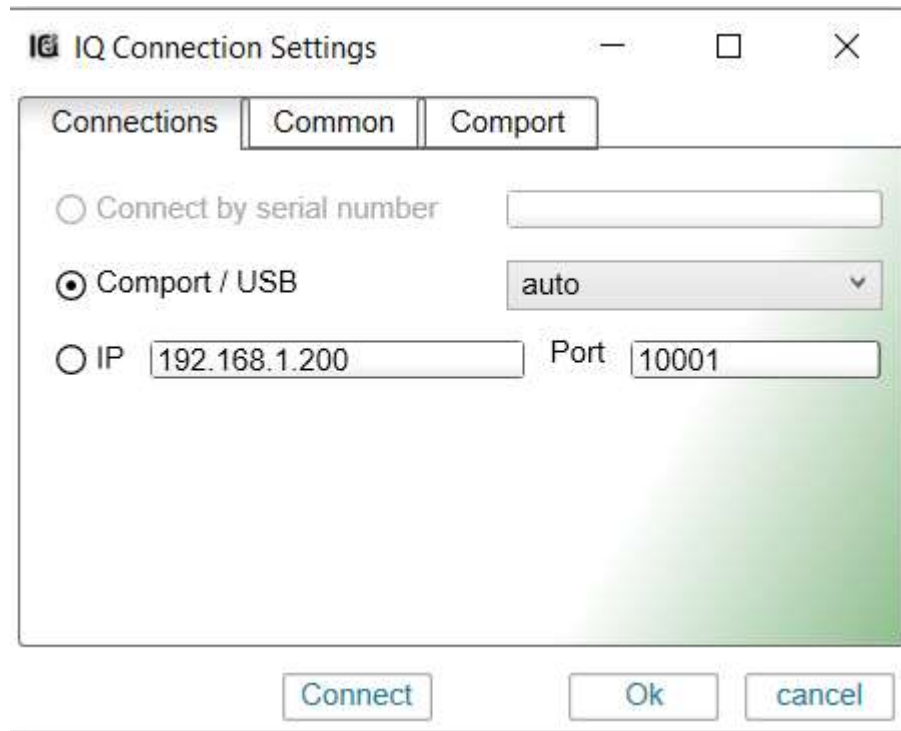


How to update iqLink/iqInterface to new firmware:

1. Download firmware update tool
2. Run it
3. Select connection parameters

Main Window -> Settings



Select Serial Port or Ethernet

4. Press "Connect" button

If the connection successful, the "Connect" button will be turn into green and status field will show information about connected device



5. To start update, press "Update" button

**Do not disconnect a device during update**

The progress bar will show progress



6. After the device will be updated, the device will be reconnected and status field will show the actual Firmware Version

